

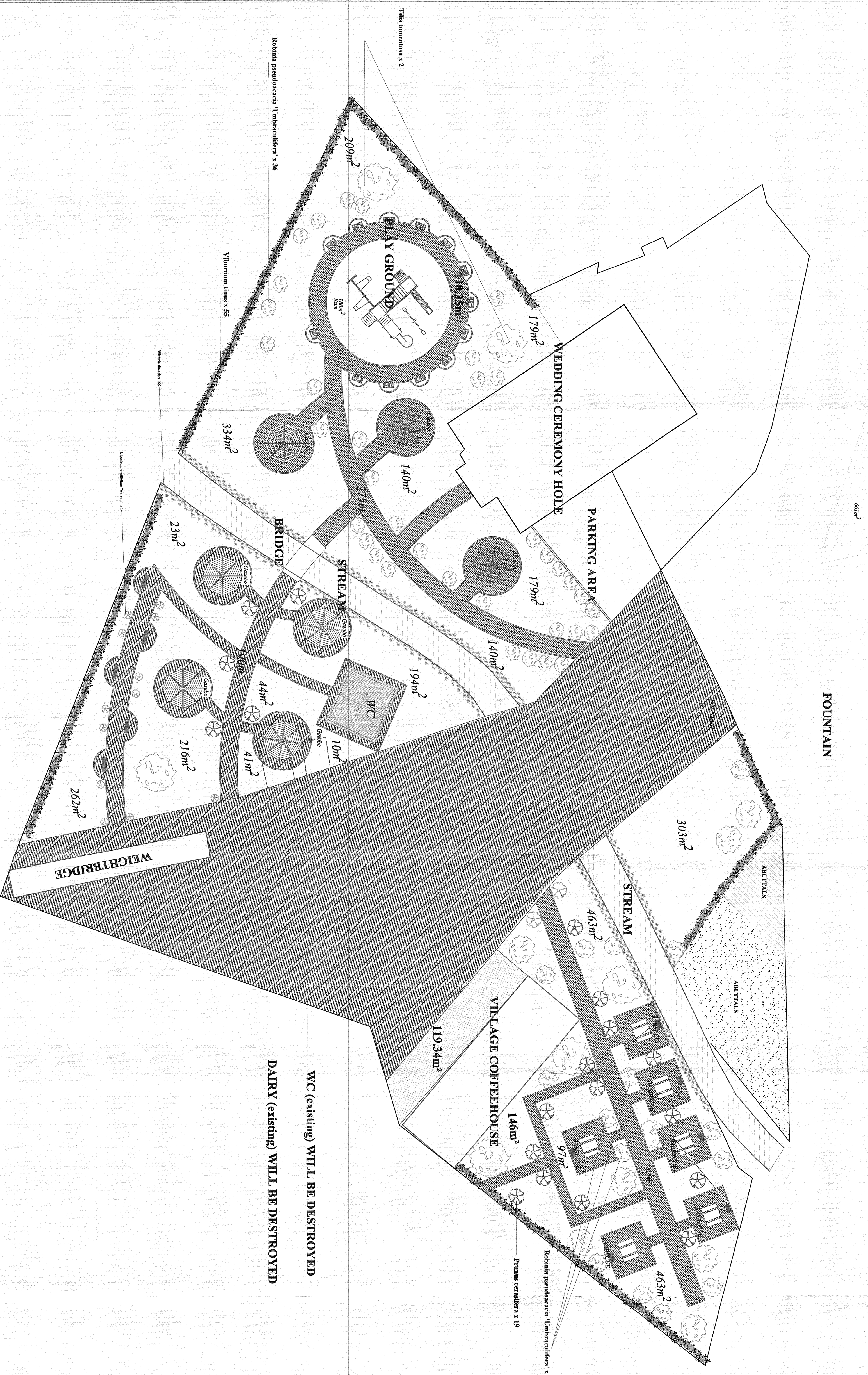
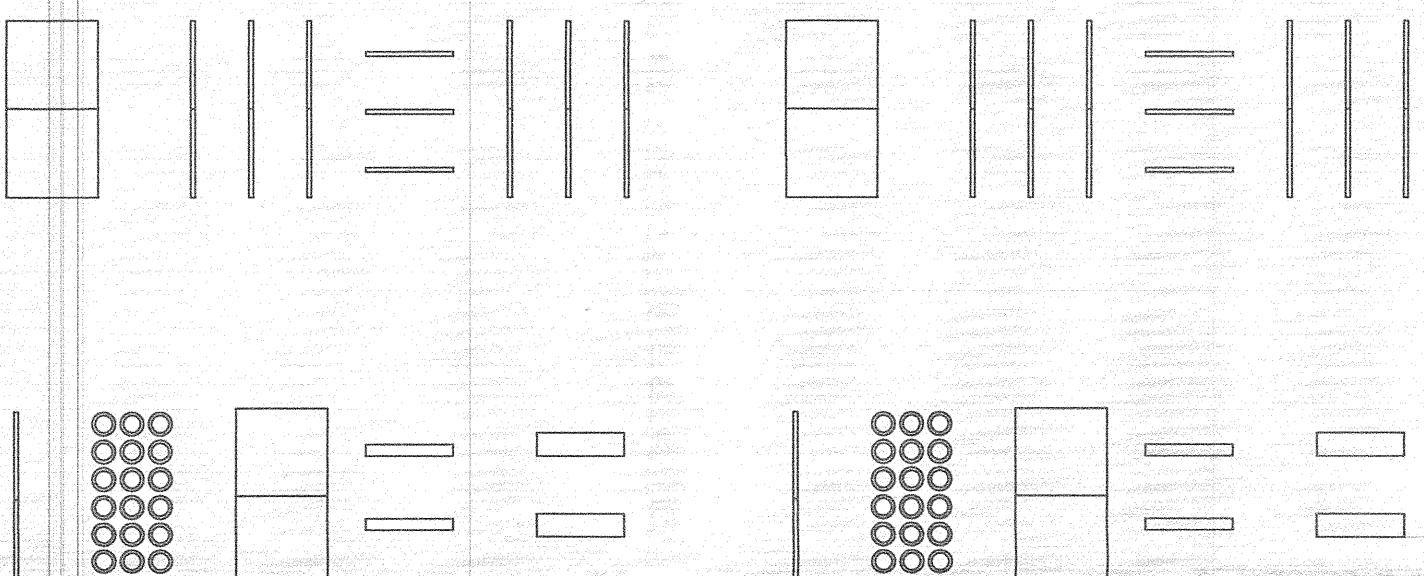
# CYCLING ROADS TO KIRKLARELI AND TSAREVO - RECREATIONAL PROJECT

NOTES:

Survivor park (thought symbolic) is the measure of the technical condition in the application and is being edited.

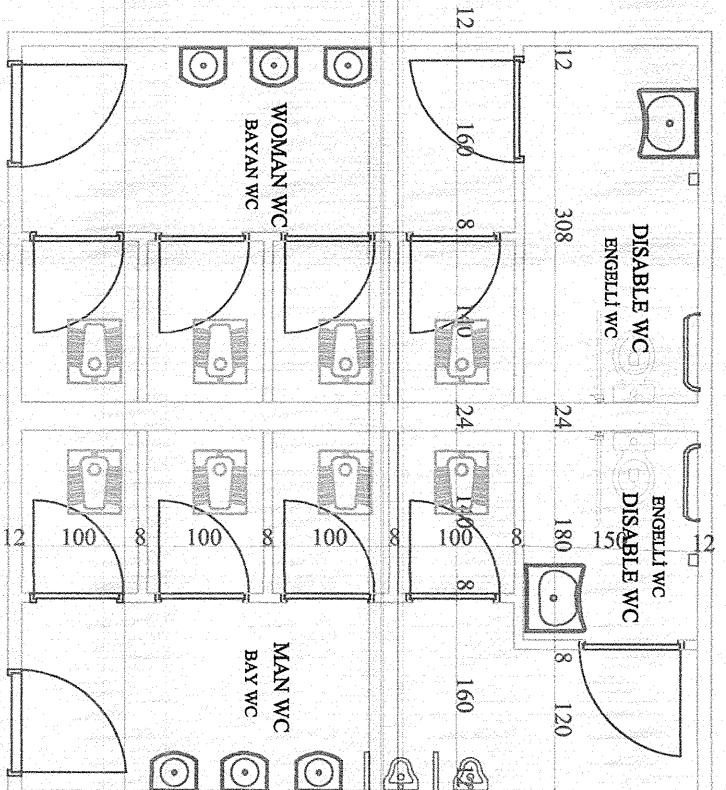
NORTH

1/200



**WC (existing) WILL BE DESTROYED**

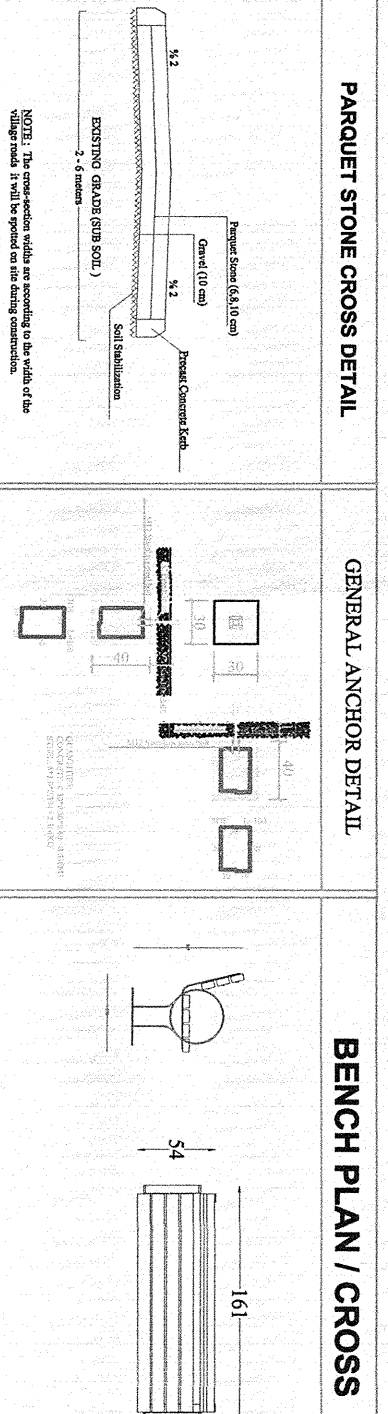
**DAIRY (existing) WILL BE DESTROYED**



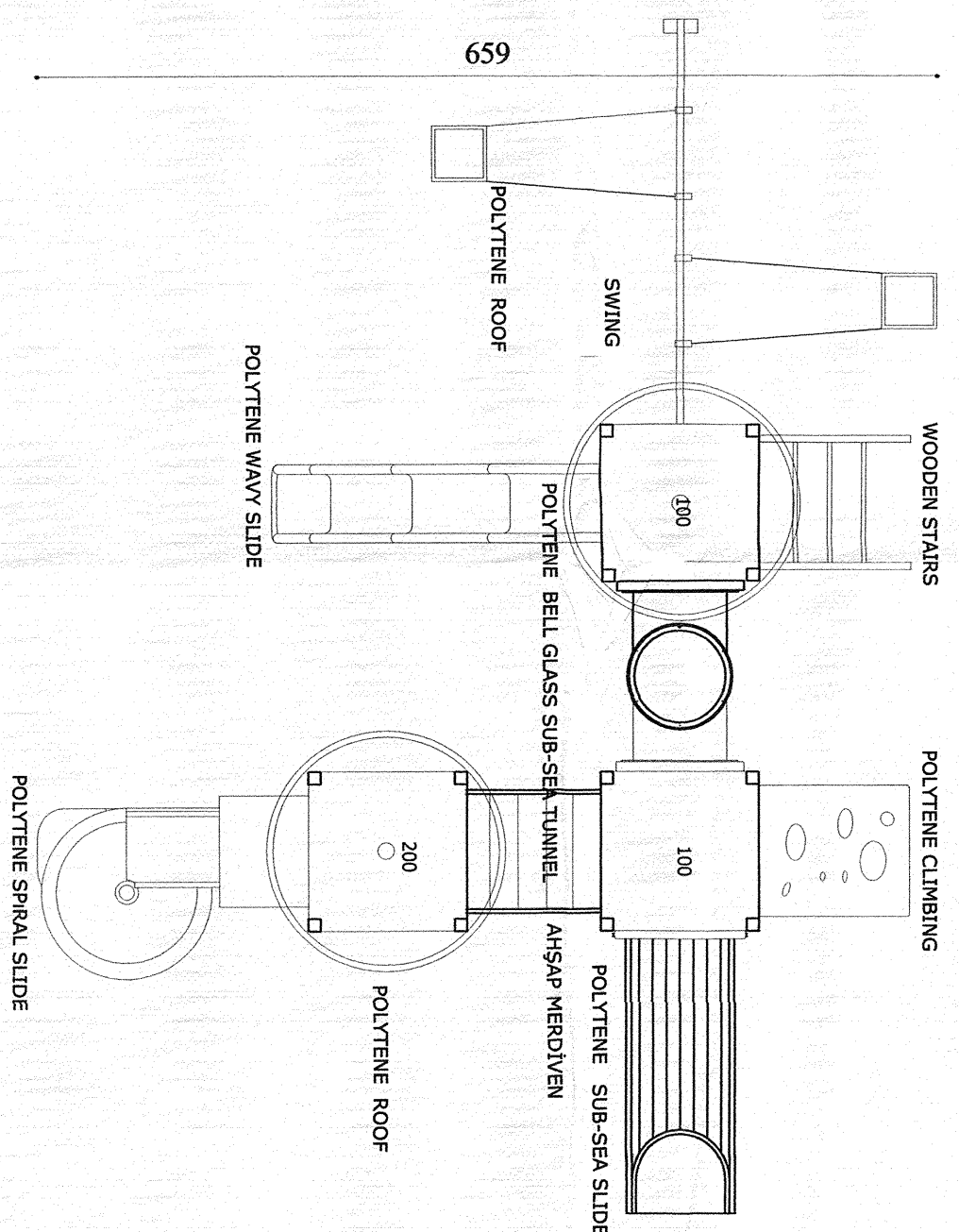
WC PLAIN

150

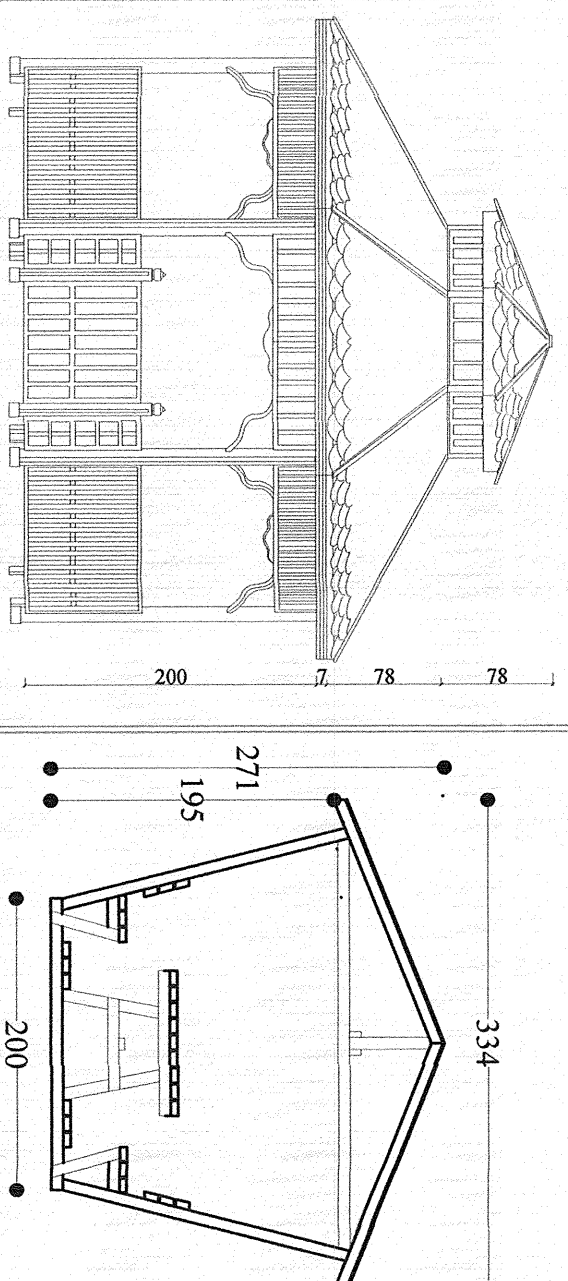
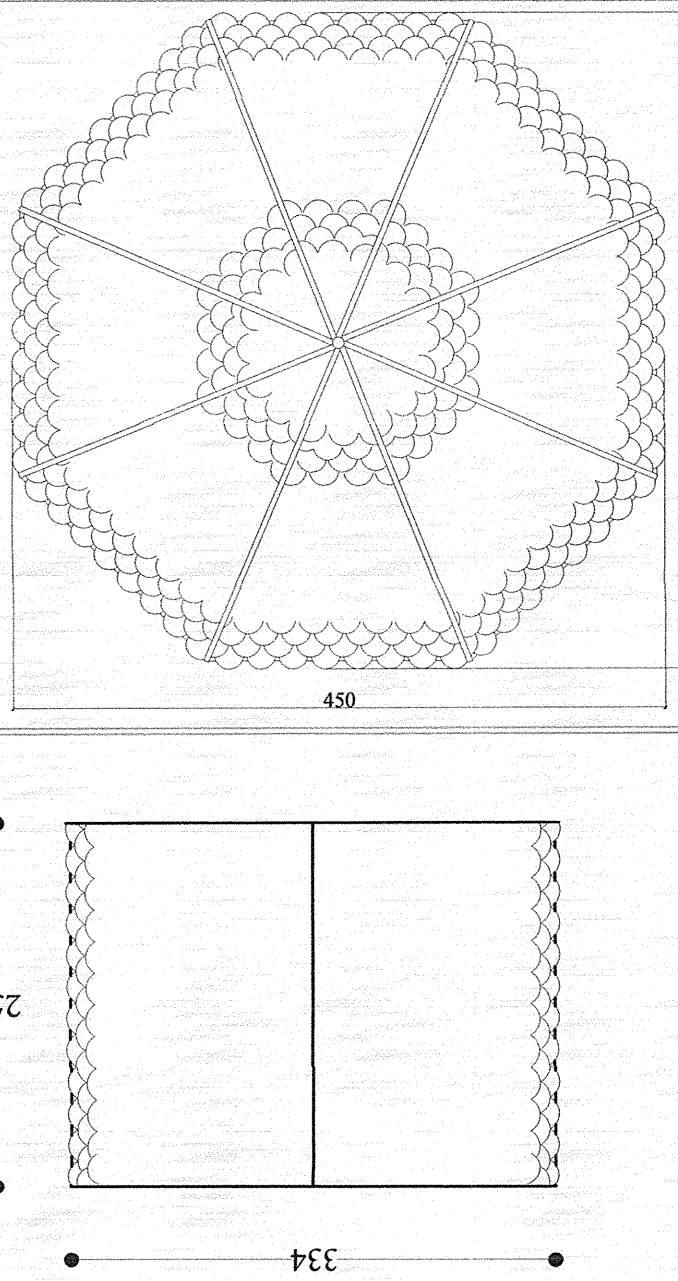
1. EXISTING WC AND DAIRY SHOWN IN THE PROJECT WILL BE DESTROYED
2. WATERIA SINENSIS (PURPLE BUNCH) WILL BE PLANTED AROUND THE RIDGE ALONG THE RIDGE LINE
3. PROJECT CHANGES MAY RESULT FROM CAUSES WHICH HAVE BEEN DURING THE APPLICATION.
4. ALL THE WALL OF THE EXISTING FOUNTAIN SHOWN IN THE PROJECT WILL REMOVE.
5. GREEN AREA WAS SHOWN IN THE PROJECT AND PARQUET STEELS ARE REMOVED AND GREEN AREA ARRANGEMENT AT PARQUET STONE AREA.
6. PROJECTED DRAWINGS FOR SURVIVOR PARK SYMBOLIC, THE TECHNICAL SPECIFICATIONS MUST BE FITTED WITH THE TECHNICAL SPECIFICATION. (Depending on the structure of the room, the length and width of the materials in the modules may be changed following the approval of the relevant official without disturbing the fiction of the game.)



## PLAY GROUND PLAN






GAZEBO PLAN/CROSS

**PICNIC TABLE PLAN/CROSS**

	SCALE	PROJECT N:	MAP SECTION:
RECREATIONAL PROJECT	1/200	1	1392 / 1555 / 1401 / 1366

## PLAN INVESTMENT PROJECT AND CONSTRUCTION MANAGEMENT

PREPARED BY Feriye YASAR Architect 	Zeynep ZOBLU Landscape Architect 
CONTROLLED BY Selim ERGON Plan Investment Department Contribution Manager 	

ASLI GIBİDİR

APPROVED BY  
JAN 2018

Brigal KUŞOĞLU  
General Secretary