

Project CB005.1.12.135 : Preparation and promotion of the process of development of European ecological network NATURA2000 in Istranca Mountain

Activity1: Demonstration of process for designation of NATURA 2000
sites in Istranca.

Establishing and development of NATURA 2000 in Bulgaria

Presented by by Ivaylo Klisurov – amphibians, reptiles, birds and Natura 2000 expert.

25 – 26 October 2017, Turkey, Demirkoy.

Challenges in Natura 2000, as a result of new countries accession – EU 25, EU 27

- **Due to enlargement of EU referent list of Natura 2000 habitats and species constantly changing**
- **Lack of referent map,**
- **Difficult or impossible access to state or scientific data collected,**
- **Difficult access to all sorts of digital data,**
- **Lack of capacity are among constrains which countries facing during their accession.**

Challenges in Natura 2000,
as a result of new countries accession

- **Big challenge is also establishment of national coverage and population size of referent habitats and species in the countries.**
- **Quite difficult and new task is determination of favorable conservation status of habitats and species.**
- **New accession countries facing huge pressure from known and unknown “investor interests”, very weak implementation of precaution principle and all preservation principals of Directives.**



Preparation and promotion of the process of
development of European ecological network
NATURA2000 in Istranca Mountain.
Project № CB005.1.12.135

Reference list of Natura 2000 habitats and species in Bulgaria

- ***Birds from Annex I, Dir. 2009/147/EC – 114***
- ***Regularly occurring migratory birds that are not included in Annex I, Dir. 2009/147/EC – 127***
- ***Habitats from Annex I, Dir. 92/43 90 ; Priority 26***
- ***Plants from Annex II, Dir. 92/43 20 (25); Priority 1 (3)***
- ***Mammals from Annex II, Dir. 92/43 25 (28); Priority 3***
- ***Fishes from Annex II, Dir. 92/43 25 (28); Priority (1)***
- ***Rept. & Amph. Annex II, Dir. 92/43 10 (3); Priority (2)***
- ***Invertebrates Annex II, Dir. 92/43 36 (40); Priority 6 (7)***

Establishment of Natura 2000 in Bulgaria

4 main phases:

- **Field inventories and compiling data to be submitted to the EK: 2003 – 2007 January 1st.**
- **Attempts to stop Natura 2000 or at least to reduce it: 2007**
- **“Revision” of data by Bulgarian Academy of science and final approval of complete list by the Government: 2007**
- **Biogeographical seminars and minor additions to fulfill insufficiencies of the network 2008 - 2009**

Input:

2002 – 2004

DEPA/DANCEE

“Conservation of species and habitats in Bulgaria: EU approximation”

2005 – 2006

2 main projects financed by MoEW (EMEPa)

- Green Balkans project “Establishment of Natura 2000 in Bulgaria”
- BSPB project “Establishment of national network of SPAs as part of Natura 2000”
+ many small NGO projects financed by international/European donors

2007

Project financed by MoEW (EMEPa)

Bulgarian Academy of Science: “Optimization of Natura 2000 in Bulgaria”

DEPA/DANCEE project 2003 – 2004

“Conservation of Species and Habitats in Bulgaria – EU Approximation”

Main goal:

Preparation of required documentation (SDF and maps) for potential Natura 2000 sites in Bulgaria (initially 12.5 % of terrestrial territory)

Field seasons – 2003 and 2004

Office team – 4 persons, Field Experts – 80 persons

Biodiversity experts participation – 2, 680 man/days

Finances: 0.5 million Euro



Preparation and promotion of the process of development of European ecological network NATURA2000 in Istranca Mountain.
Project № CB005.1.12.135

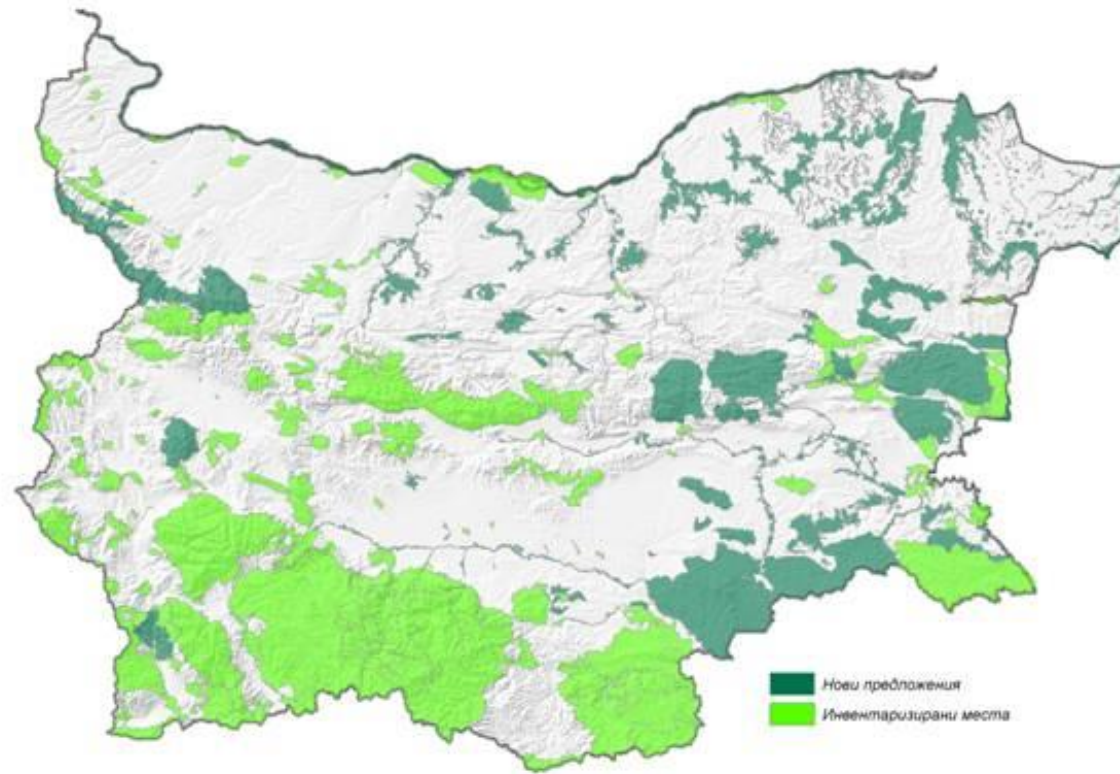
The “Blue map” – 42 % of the Bulgaria’s territory = potential Natura 2000



The “Blue map” –
42 % of the Bulgaia’s territory = potential Natura 2000

[illegible]

Inventoried till the end of 2004 6% of natural habitats, 10% of fauna
Identified potential Natura 2000 : 34% of county's terrestrial territory



Green Balkans/Bulgarian MoEW project 2005-2008

MoEW “delegated” to Green Balkans the preparation of the National list of Natura 2000 sites

➤ **AIMS:**

- **Implementation of the engagements of Bulgaria in the process of EU accession on designation of NATURA 2000 network**
- **Preparation of required by EC documentation on potential NATURA 2000 sites – Standard Data Forms and maps based on field inventories of EU significant habitats and species.**
- **Keeping momentum of DEPA project as a guarantee of quality and in time fulfillment of engagements**



Preparation and promotion of the process of development of European ecological network NATURA2000 in Istranca Mountain.
Project № CB005.1.12.135

Green Balkans/MoEW project 2005 - 2008

- **Office Team 5,**
- **Field Teams - more than 150 experts**
- **Man days: more than 10 000**
- **PROJECT DURATION: 01.02.2005 – 30.06.2008**
- **BUDJET: 670 000 Euro**



Preparation and promotion of the process of
development of European ecological network
NATURA2000 in Istranca Mountain.
Project № CB005.1.12.135

Project activities:

1. Coordination of Natura 2000 network establishment at national level
 - Coordination and QA of field inventories
 - Maintenance and update of National Natura 2000 GIS and Data base
2. Field inventories and fulfillment of SDF
3. Establishment of national figures for habitat coverage and population sizes to assess level of compliance with EU requirements and gaps
4. Clarification of NATURA 2000 site boundaries and adjustments of 1:100,000 maps to the National cadastre in scale 1: 5 000. Estimation of land use and land purpose within proposed NATURA 2000 sites.

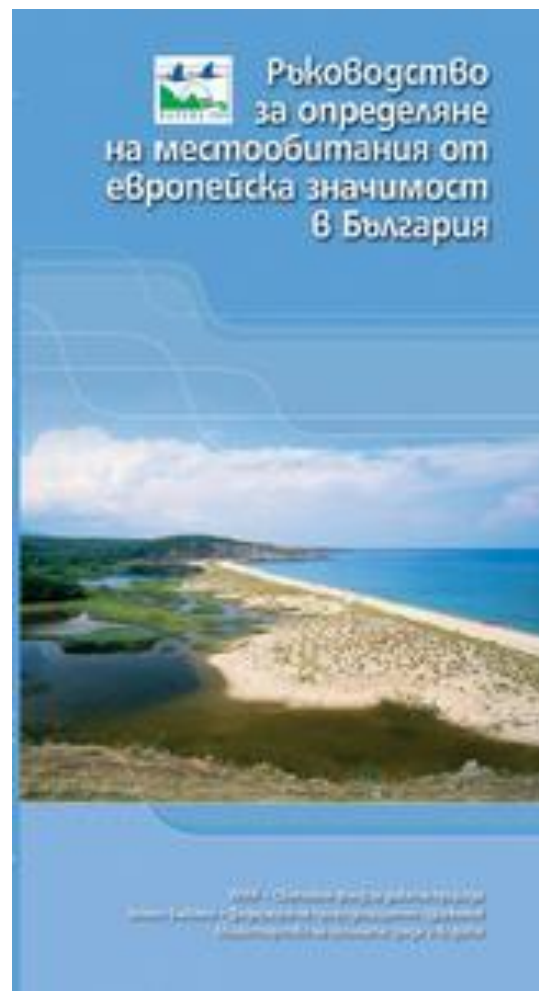
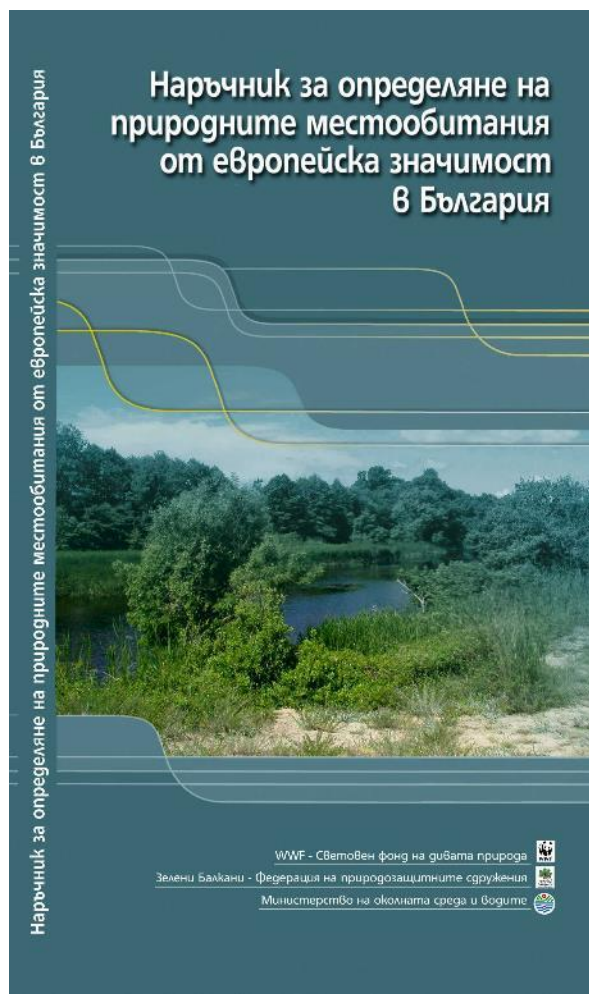
Approach, Methodology and Steps

- **Use of all relevant data**
- **Clarification of borders of biogeographical regions in Bulgaria**
- **Identification of eco-corridors and stepping stones**
- **Determining of the “Bulgarian” target (= referent) species and habitats**
- **Choosing of referent map – CORINE Landcover**
- **Determining of target sites to be inventoried**
- **Inviting the leading biodiversity experts of NGO and scientific community**
- **Development of National Natura 2000 GIS and database strategy**
- **Establishing criteria for final site selection**

Field inventories:

- **Revision of habitats and species list**
- **Publication of Bulgarian Habitats Guide (in cooperation with WWF - DCP) & Herpetological guide (in cooperation with Herpetological society)**
- **Selection of sites to be investigated**
- **Carrying out field inventories in sites where there is no or insufficient biodiversity data available**
- **Compiling and analyzing existing biodiversity data from protected areas network in Bulgaria**
- **Preparing Standard NATURA 2000 data forms for sites investigated**
- **Compiling inventory results in MoEW NATURA 2000 Data base and analyze data**

Publication of Bulgarian Habitats Guide (in cooperation with WWF - DCP) & Herpetological guide (in cooperation with Herpetological society)



Interreg - IPA CBC
Bulgaria - Turkey
PARTNERSHIP



Preparation and promotion of the process of
development of European ecological network
NATURA2000 in Istranca Mountain.
Project № CB005.1.12.135

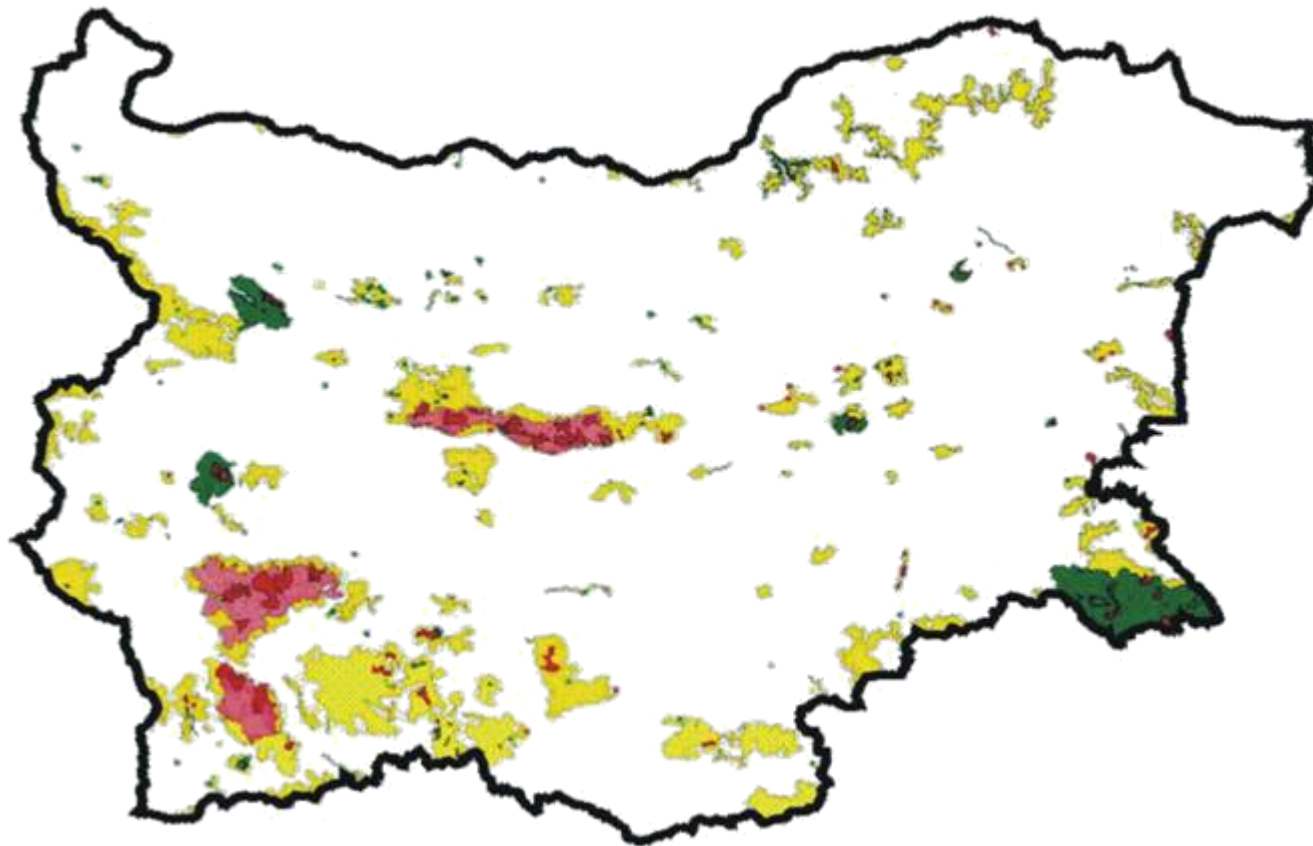
All achievements of previous investigations are considered:

- **National Action Plan for conservation of the most important wetlands in Bulgaria, 1995;**
- **National Strategy for Biodiversity Conservation, 1995;**
- **CORINE Biotopes Project, 1994;**
- **CORINE Landcover Projects, 1990 and 2000;**
- **EMERALD Project;**
- **RAMSAR sites;**
- **Important Bird Areas (IBA), 2000;**
- **Established network of protected areas and their Management Plans;**
- **Strategy /2001/ and Action Plan /2003/ for the Protection and Restoration of Floodplain Forests on the Bulgarian Danube Islands.**



Preparation and promotion of the process of development of European ecological network NATURA2000 in Istranca Mountain.
Project № CB005.1.12.135

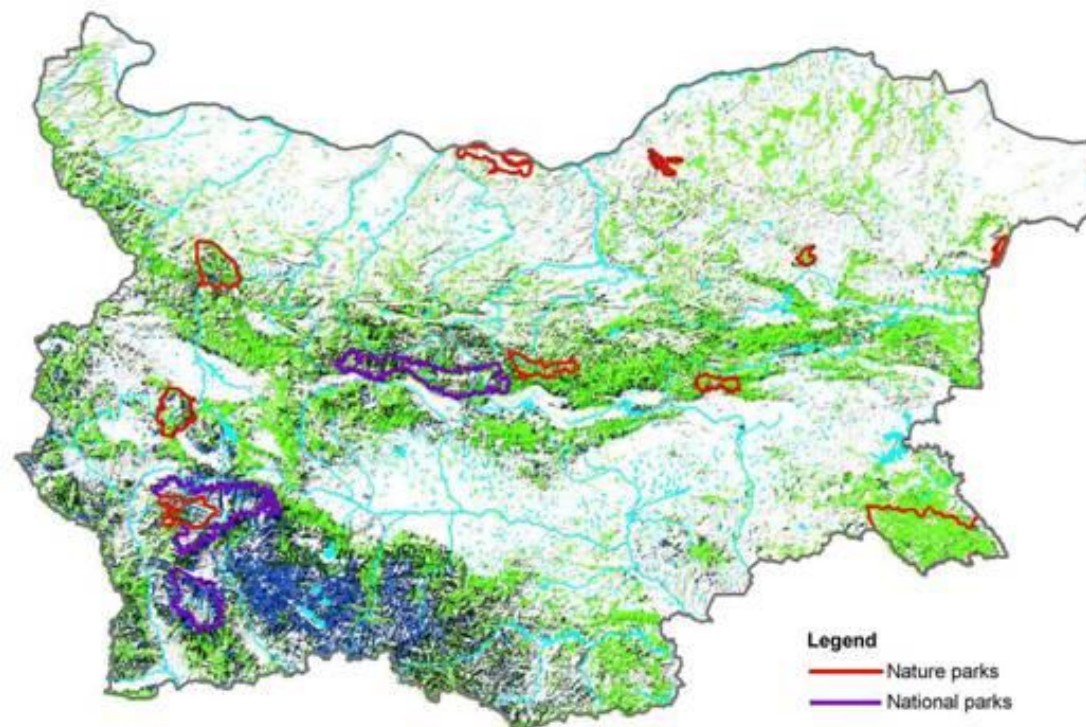
CORINE Biotopes project 1994



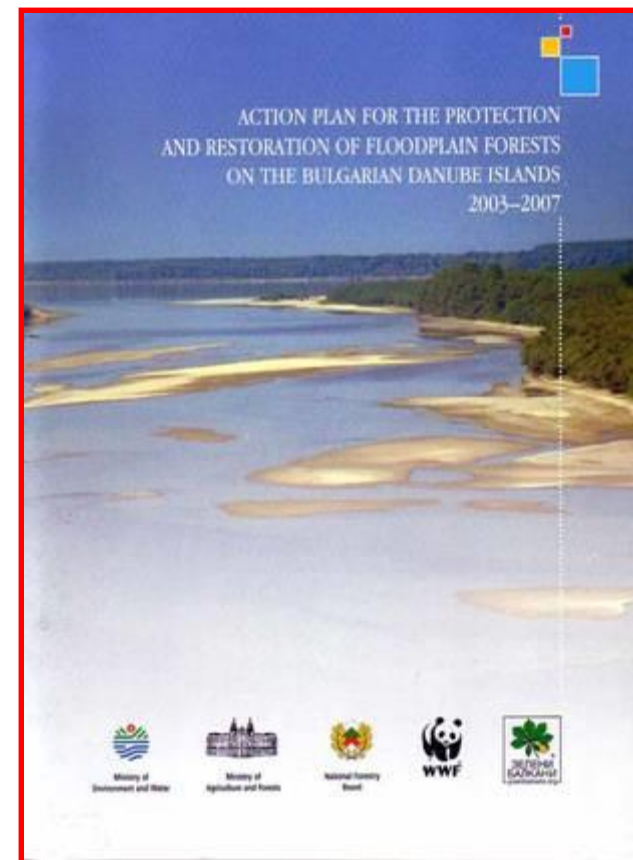
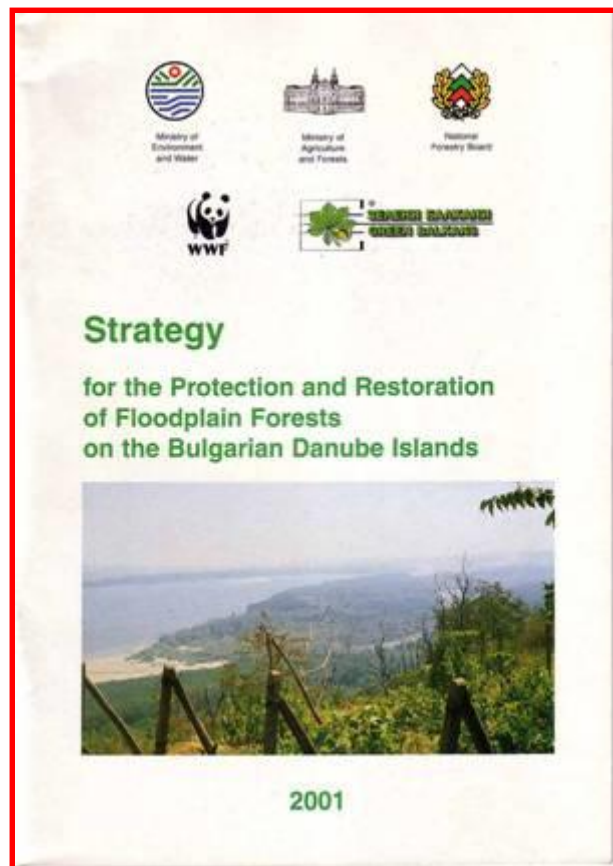
National Action Plan for Conservation of the most important Wetlands in Bulgaria, 1995



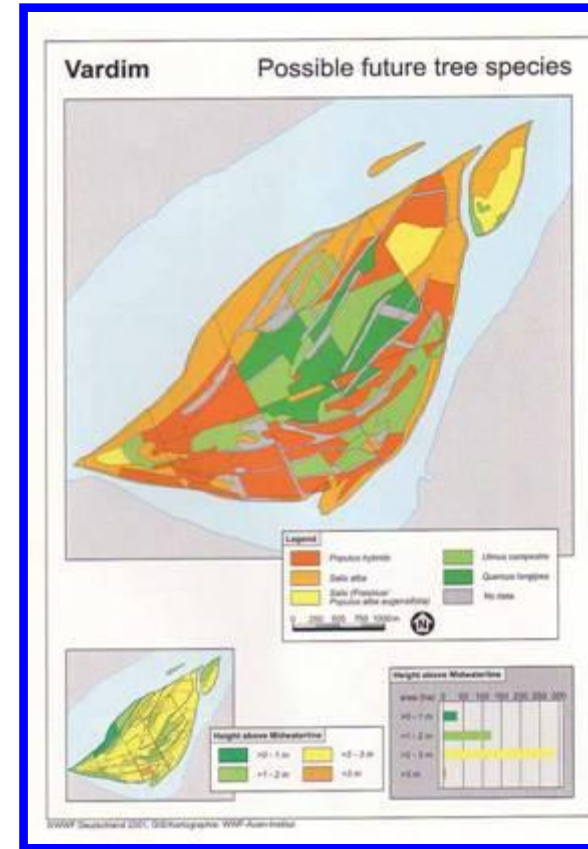
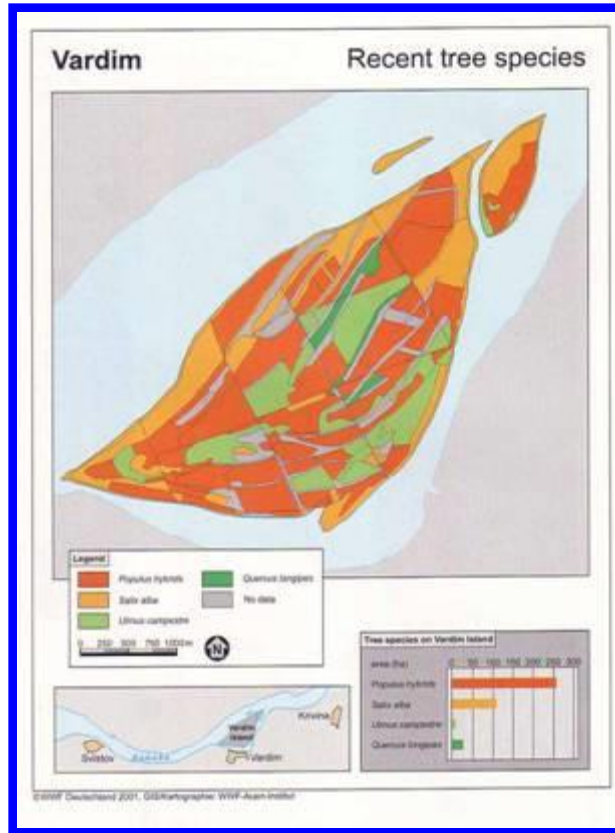
Management Plans (existing and under preparation) of “traditional” protected areas network



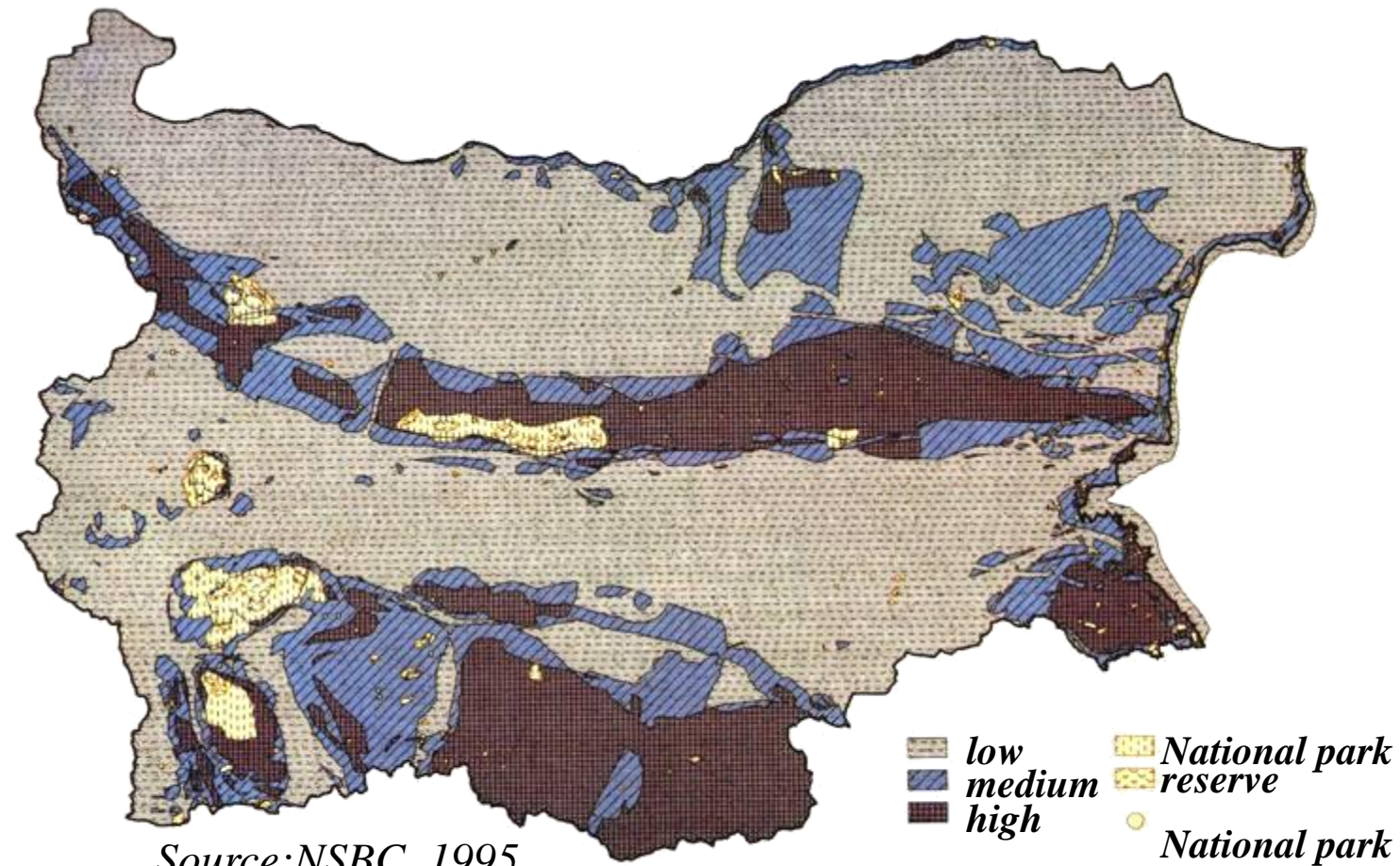
Strategy and Action Plan for Danube islands



Strategy and Action Plan for Danube islands

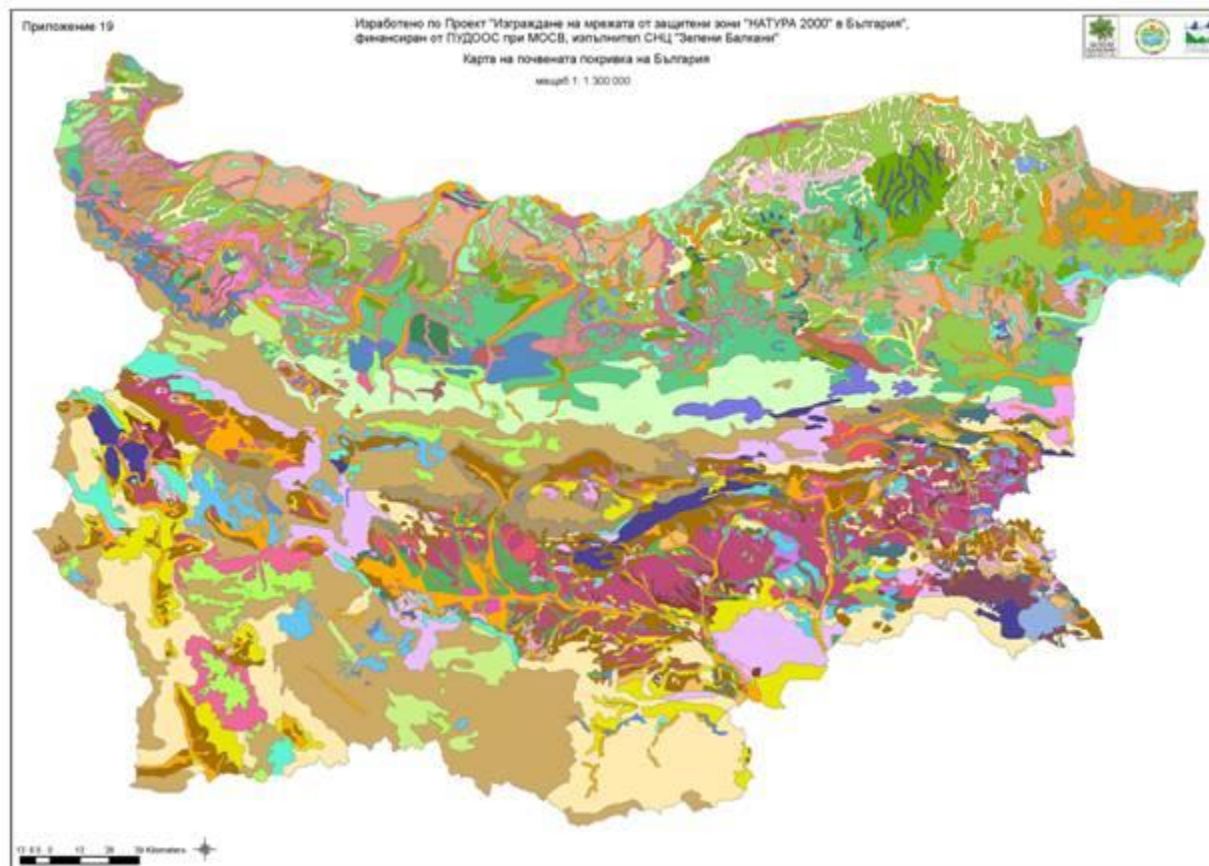


National Strategy for Biodiversity Conservation, 1995



Source: NSBC, 1995

Searching, collecting, digitilasing info from verious sourses



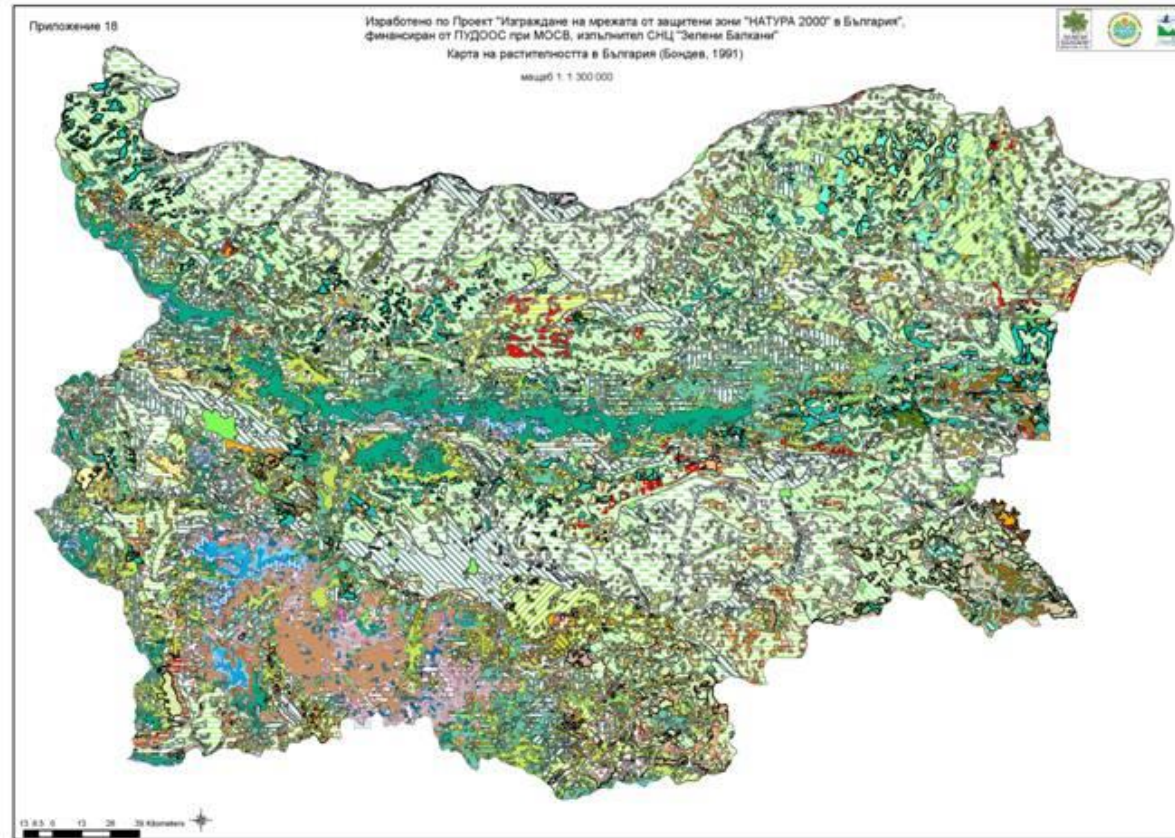
Interreg - IPA CBC
Bulgaria - Turkey

PARTNERSHIP

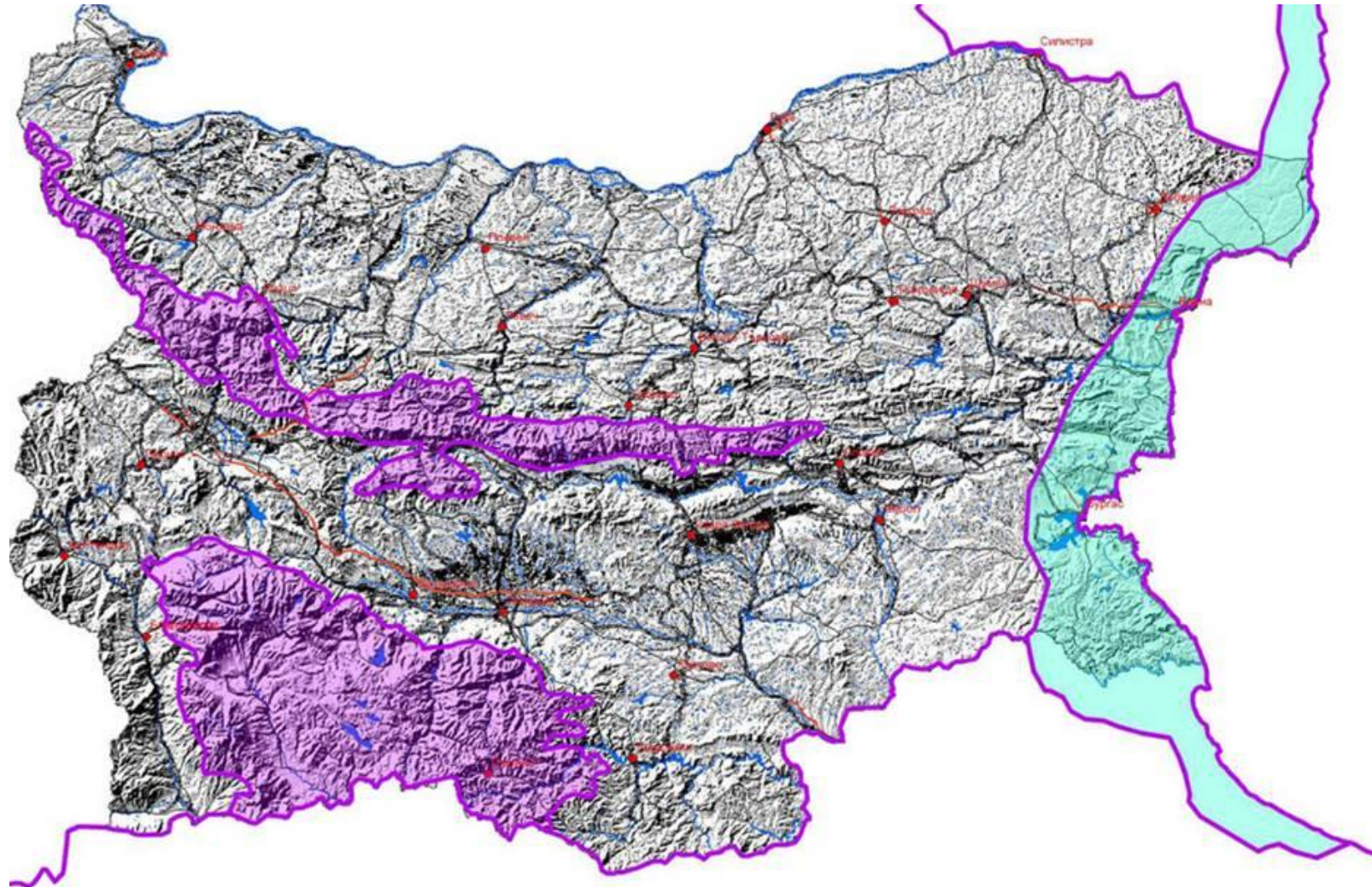


Preparation and promotion of the process of
development of European ecological network
NATURA2000 in Istranca Mountain.
Project № CB005.1.12.135

Searching, collecting, digitilasing info from verious sourses



Biogeographical regions in Bulgaria ETC/ BNP version, 2002



Field work preparation

- **Development of Bulgarian Natura 2000 Field Manual**
- **Field equipment**
- **Prioritization of target sites**
- **Distribution of sites among experts**
- **Signing contracts with experts**
- **Trainings on usage of field equipment (GPS), completion of SDF etc.**

GIS Strategy

1. Field inventory maps

A crucial issue in the GIS strategy is the selection of map projection, and it was decided to use both – WGS 84 and the national coordinate system – Baltic coordinate system, 1970.

2. GPS use –

It was decided that an accuracy of 2-3 m for the GPS devices would be sufficient. GARMIN 72 was therefore chosen as an appropriate model.

Conversion of the GPS waypoint coordinates from WGS84 to the basic coordinate system of the project – Baltic, 1970.

3. Natura 2000 software –

In order to be accurate it is important to work with the latest version of the Natura 2000 software from the European Commission.

Important experience was gained with the Project's participation in the workshop "Natura 2000 GIS and Data requirements" in Brussels 29 -30 October 2003. The Project Team is prepared to fulfill the requirements of the ETC/NPB and the Spatial Application Division.

4. *National GIS database*



Preparation and promotion of the process of development of European ecological network NATURA2000 in Istranca Mountain.
Project № CB005.1.12.135

National GIS Database

- Database for Potential Natura 2000 sites (pSCI and SPA)
- Dataset showing the relations between potential Natura 2000 sites and Bulgarian protected areas network
- Dataset showing the municipal location of the potential Natura 2000 sites (how many and which municipalities are within the potential Natura 2000). This dataset was created to help the project with getting digital cadastral information
- Feature classes for boundaries of some national and nature parks and reserves
- Feature class for Bio-geographical regions
- Grid (3D visualization) showing the terrain on the basis of contour lines of every 200 m

Field Inventory Form

- **The Field Inventory Form contains extracts of the Standard Natura 2000 forms and Explanatory notes**
- **Contacts Lists of local experts form the MoEW and MAF inspectorates**
- **Contact Lists of the inventory teams**
- **Permission in accordance with the Bulgarian legislation and letters of collaboration from the MoEW and MAF to their local inspectorates**
- **Instructions for working with GPS devices**
- **Methodologies for population estimation of different fauna groups**
- **Form for reporting of illegal Environmental Activities observed**
- **Form for Proposing designation of new protected area**
- **Lists of Protected areas according to their municipal distribution**
- **Maps**

Field Inventory Manual (List of Annexes) on Natura 2000 in Bulgaria

- **Potential Natura 2000 sites – targets of inventories during the field season of the project**
- **List and contacts of field experts participating in the inventories – Fauna teams**
- **List and contacts of field experts participating in the inventories – Habitats & Flora teams**
- **List and contacts of experts from regional inspectorates of MoEW**
- **List and contacts of experts from National forestry board/MAF regional and local units**
- **List of habitats from Annex 1 of Habitats Directive occurring in Bulgaria**
- **Habitat classes of CORINE Landcover classification**
- **List of target species to be inventoried - Annex 3 of Biodiversity Act**
- **List of plant species from Annex I of Habitat Directive occurring in Bulgaria**

Field Inventory Manual (List of Annexes) on Natura 2000 in Bulgaria

- **Activities influencing protected status of sites /full list of activities/**
- **Activities influencing protected status of sites /list of activities with codes/**
- **Project Summary**
- **Official permission (required by The Bulgarian Biodiversity Act) from MoEW for experts field work**
- **Supporting letter from MoEW sent to it's regional Inspectorates**
- **Supporting letter from MAF sent to it's regional and local offices**
- **Instructions for work with GPS equipment**
- **Recommendations for collection of additional information**
- **Form for collection of additional information**

Field Inventory Manual (List of Annexes) on Natura 2000 in Bulgaria

- **Methodology for ornitofauna inventories**
- **Instructions for bats data collection**
- **Instructions for herpetofauna data collection**
- **Instructions for invertebrate fauna data collection**
- **Activities and expenditure Reporting form for the field experts**
- **Form for reporting of observed illegal environmental activities**
- **Form for proposing designation of new protected area**
- **Protected areas in the borders of municipalities to be inventoried in the field season**
- **Distribution of sites to be inventoried in the field season amongst the municipalities**

Field inventory maps

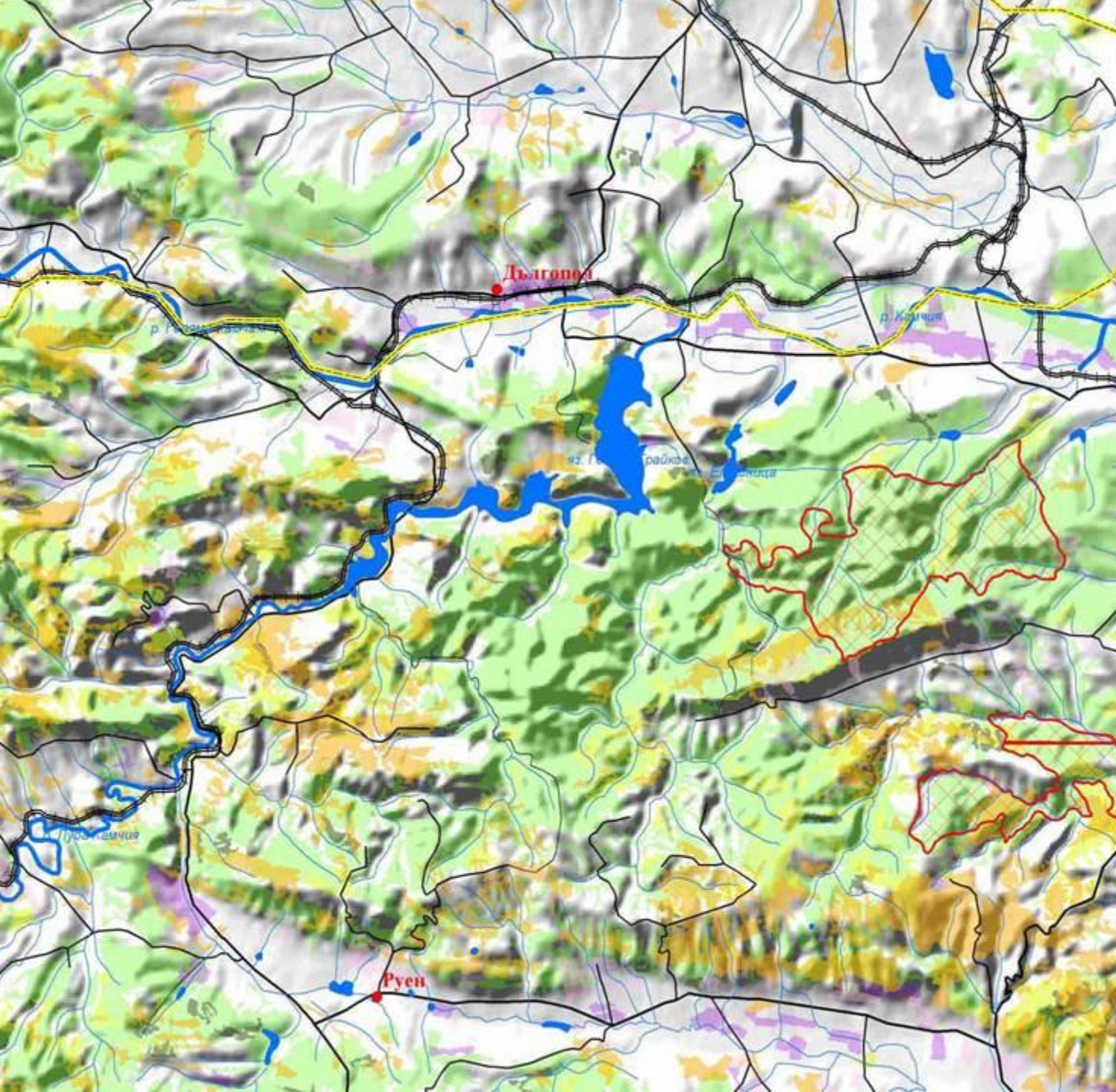
In the national coordinate system – Baltic coordinate system, 1970 - four different geodatabases had to be created – K3, K5, K7 and K9.

Each of the four geodatabases contains the following datasets:

- **Land coverage (includes compiled and analysed data from different classes of CORINE Land Cover Project, the information has been received as ArcInfo coverage files, created on the interpretation of satellite images with a resolution 30/30 m; the coverage files were converted and geo-referenced in order to be integrated into geodatabase); type of feature class: polygons;**
- **Boundaries of the potential Natura 2000 cites; type of feature class: polygons;**
- **Boundaries of CORINE sites; type of feature class: polygons and points;**
- **Boundaries of IBA; type of feature class: polygons and points;**

Field inventory maps

- **Regional centres; type of feature class: points;**
- **Regional boundaries; type of feature class: polylines;**
- **Municipal centres; type of feature class: points;**
- **Municipal boundaries; type of feature class: polylines;**
- **Settlements; type of feature class: points;**
- **Hydrological network; type of feature class: polylines;**
- **Road network; type of feature class: polylines;**
- **Contour lines; type of feature class: polylines;**
- **Railway network; type of feature class polylines;**



FIELD MAP

Scale 1:100000

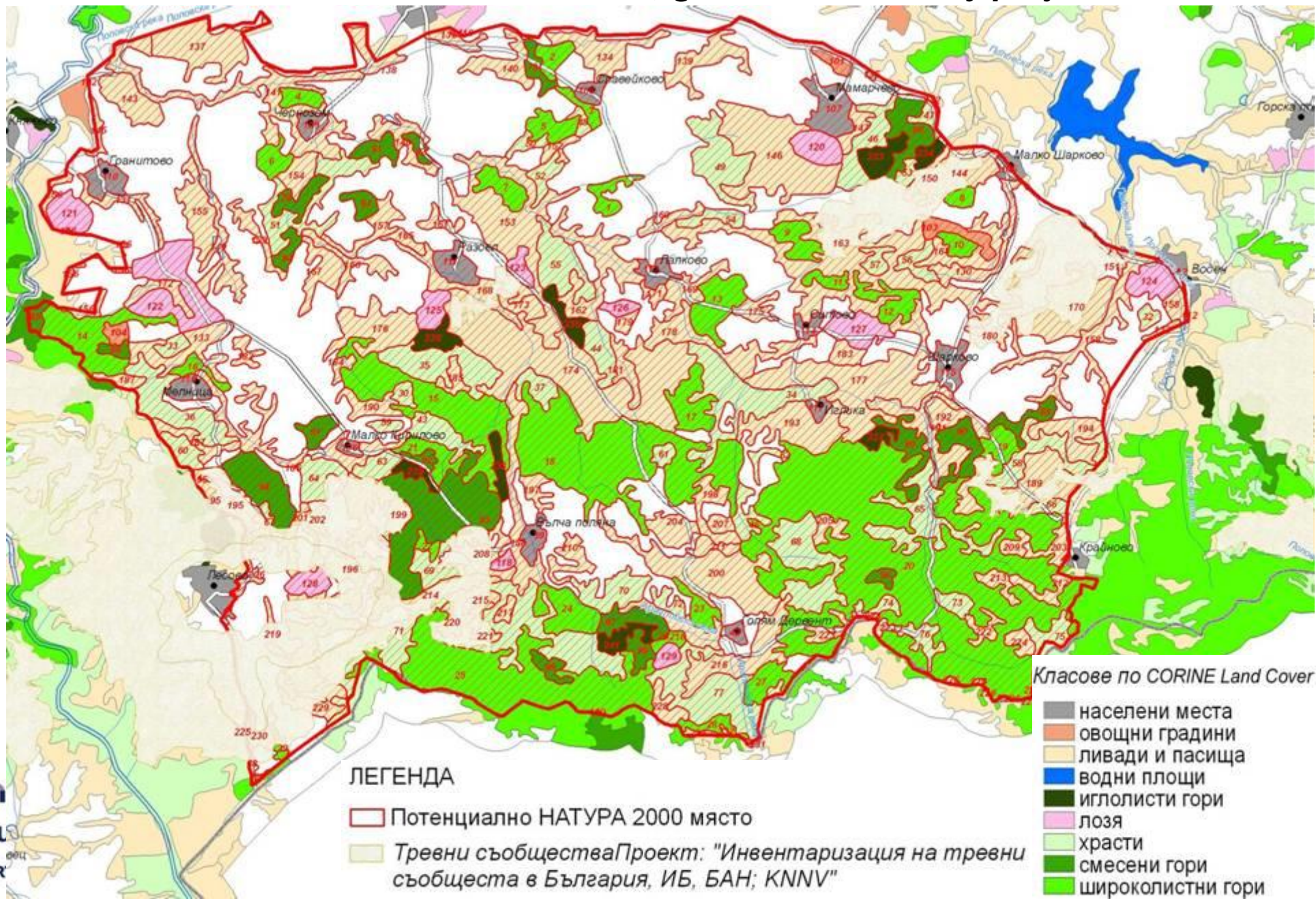


LEGEND

- Settlements
- Regional centers
- Municipal centers
- Contour lines at intervals of 200 m
- State boundary
- Road net
- Regional boundaries
- Boundary of regional and municipal towns
- Railway net
- Municipal boundaries
- Hydrological net
- Important Bird Areas
- ▨ CORINE site with an area > 100 ha
- * CORINE site with an area < 100 ha
- Red square: Rocks
- Purple square: Orchards
- Pink square: Vineyards
- Orange square: Pastures
- Light green square: Shrubs and herbaceous association
- Blue square: Water bodies
- Yellow square: Beaches, dunes and sands
- Brown square: Rice fields
- Bright green square: Broad-leaved forests
- Dark green square: Coniferous forests
- Green square: Mixed forests

he process of
gical network
ca Mountain.
005.1.12.135

Field map of potential Natura 2000 site "Derventski vazvisheniya 1" – Sources: CORINE Land Cover, grassland inventory project

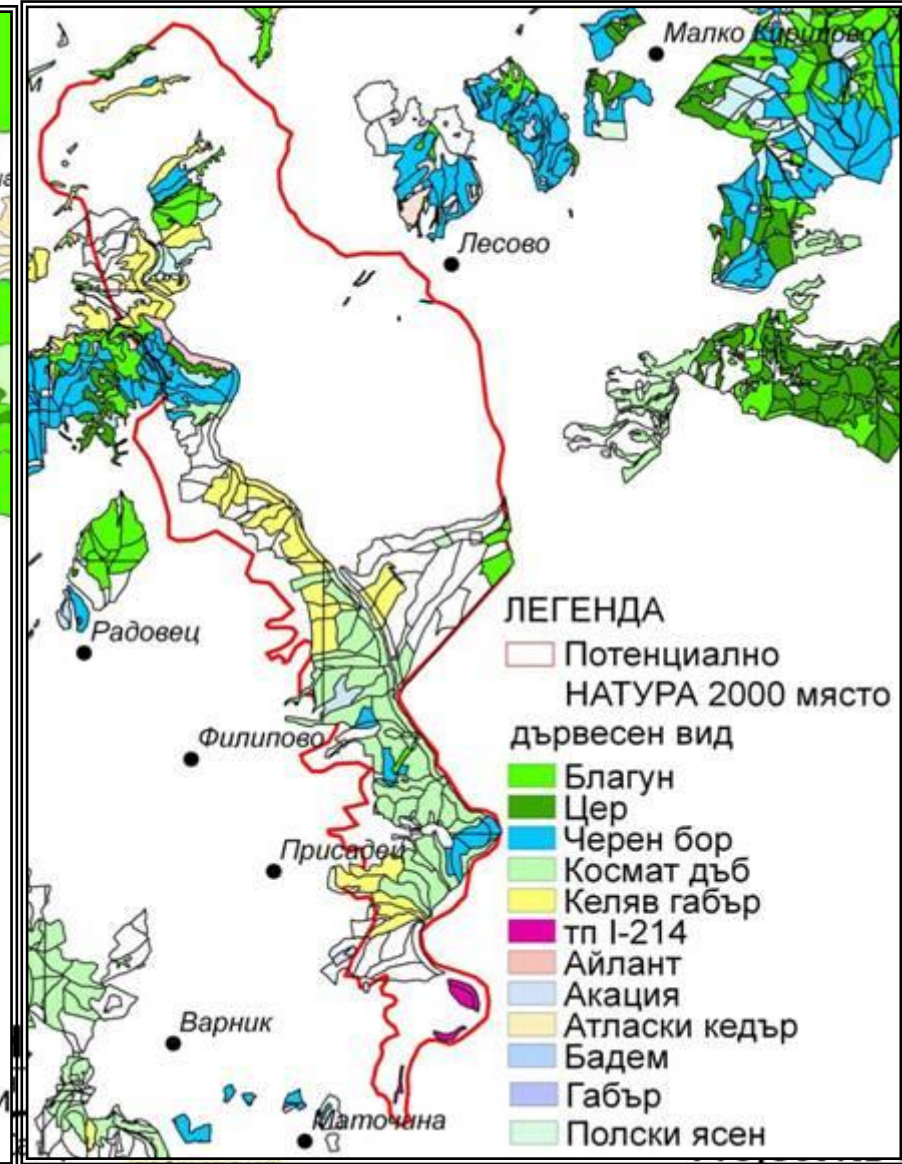


the process of
gical network
ca Mountain.
005.1.12.135



In
Bu
PAR

Potential Natura 2000 site “Jdreloto na reka Tundja”, CORINE Land cover BG0000217 Forestry management plan map



of the process of
logical network
anca Mountain.
B005.1.12.135

Flora and Habitats team



Birds Team

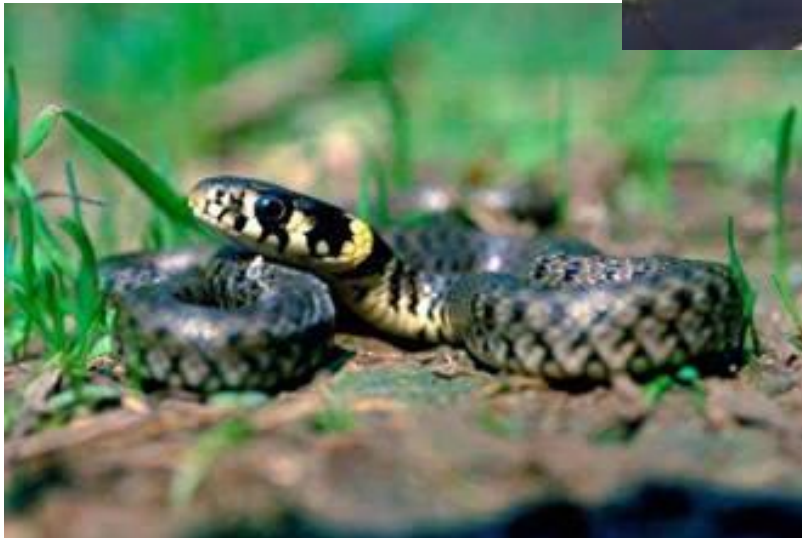


Preparation and promotion of the process of
development of European ecological network
NATURA2000 in Istranca Mountain.
Project № CB005.1.12.135

Mammals Team



Herpethofauna Team



Preparation and promotion of the process of development of European ecological network NATURA2000 in Istranca Mountain. Project № CB005.1.12.135

Ihtiofauna Team



Preparation and promotion of the process of development of European ecological network NATURA2000 in Istranca Mountain. Project № CB005.1.12.135

Invertebrates Team



Marine habitats Team



Field inventory rates

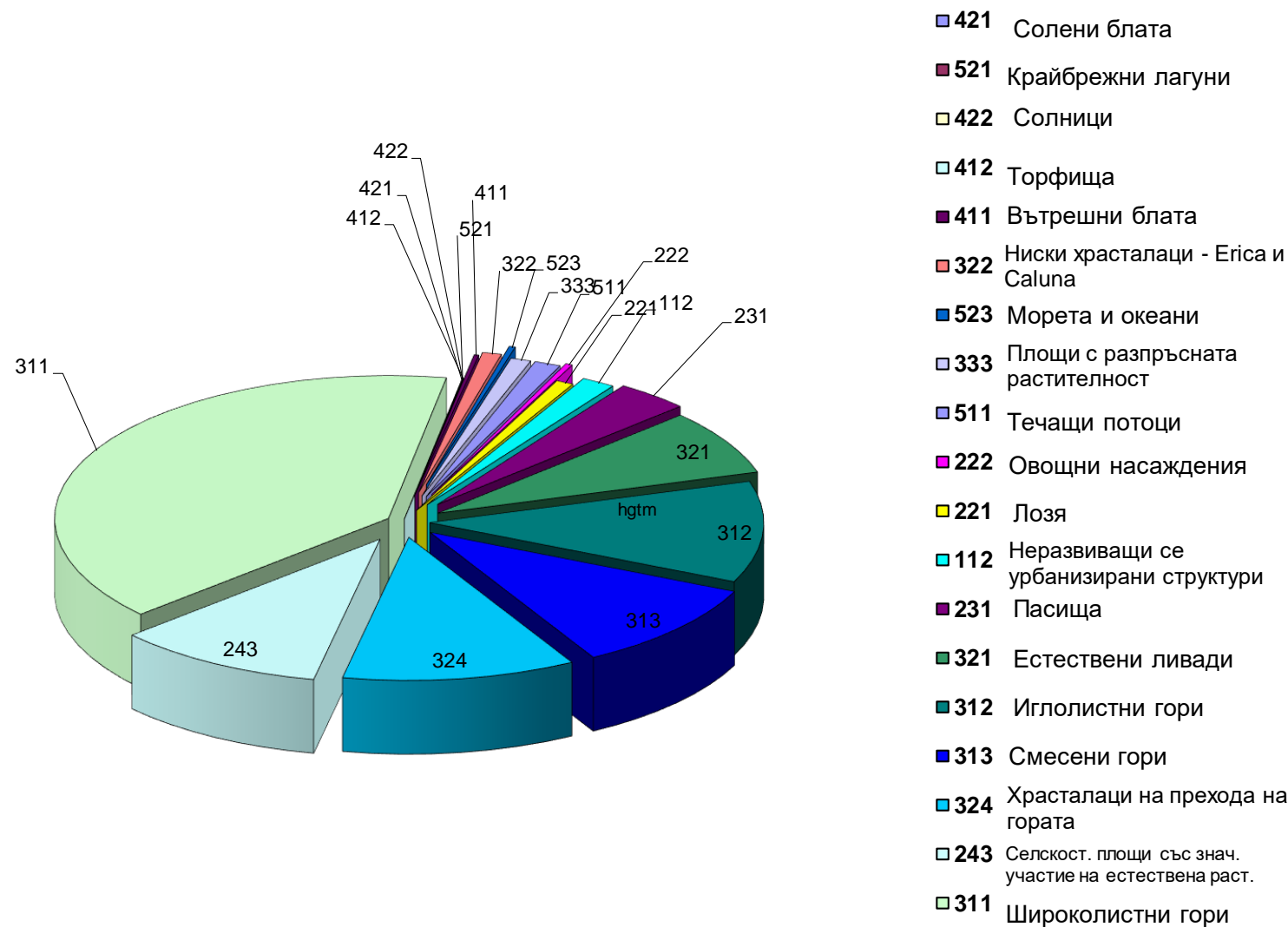
Area objects:

- Natural habitats + plants – 750ha.per man/day
- Fauna – 1200 ha. Per man/day

Linear objects:

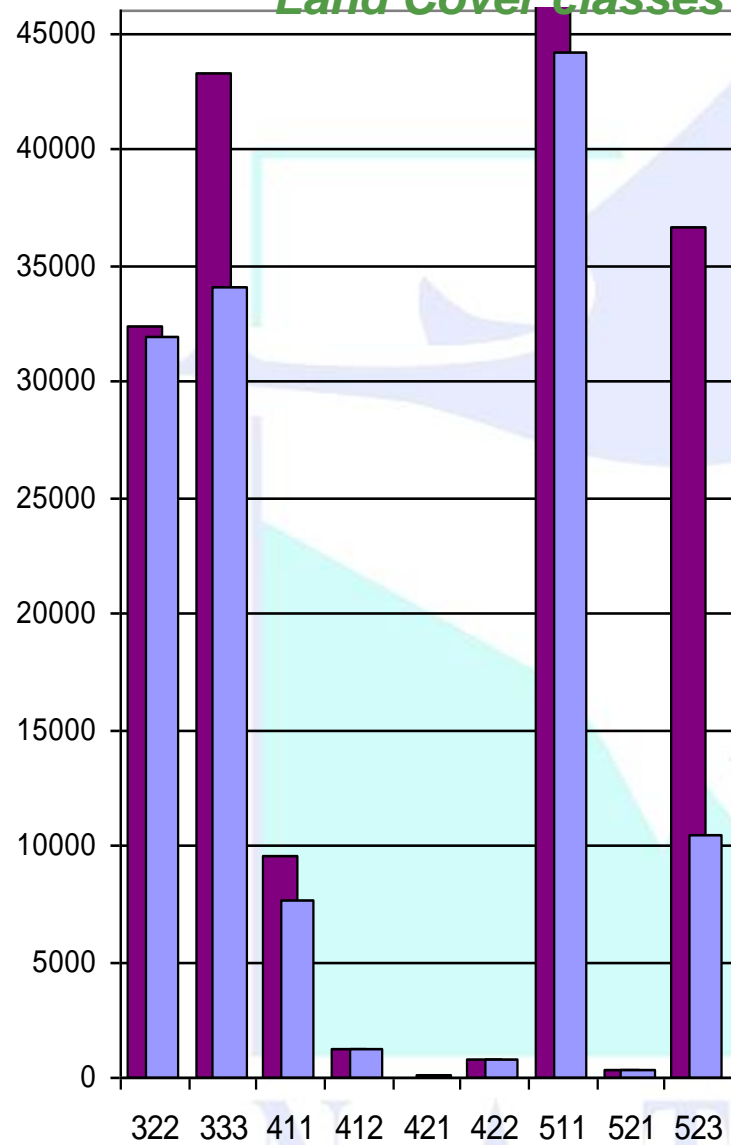
- 10 km. per day (either for fauna or flora)

Land Cover classes distribution among potential Natura 2000 network

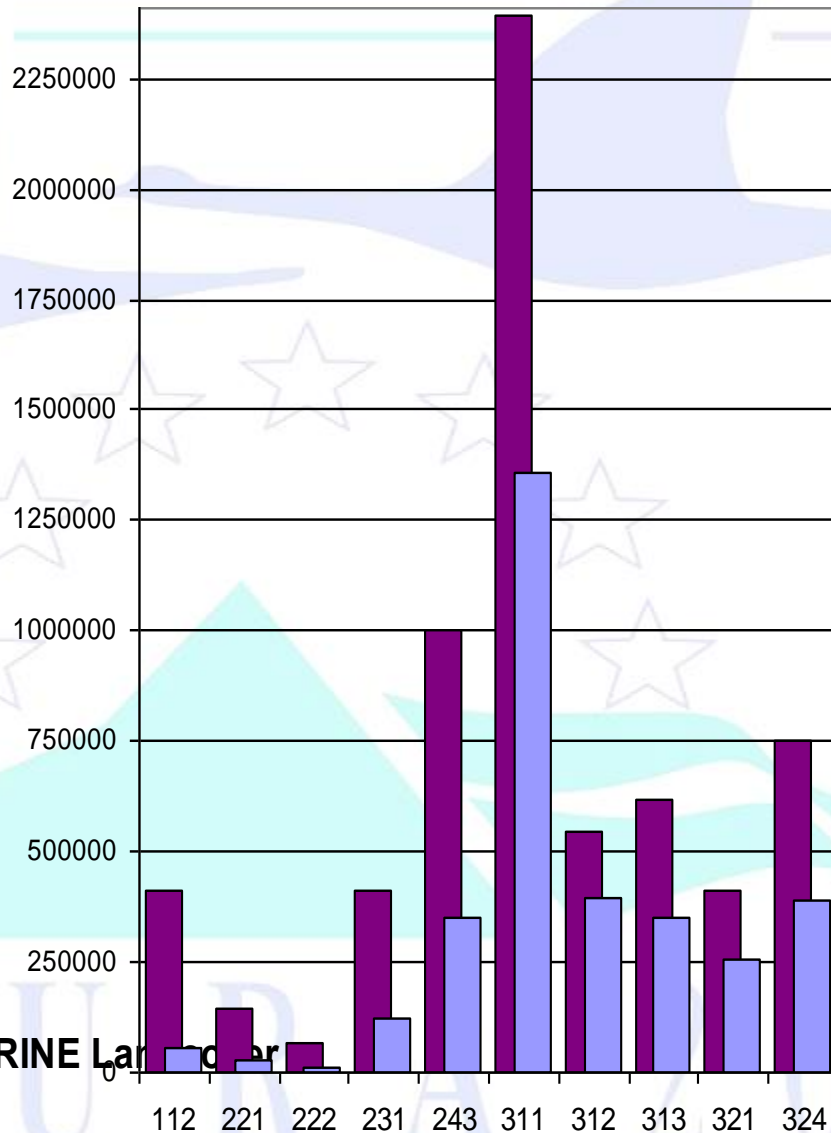


Покритие, [ha] ■ за цялата страна ■ в проекто-мрежата Natura 2000

Land Cover classes distribution among potential Natura 2000 network



Класове от CORINE



- Неразв. се
- 112 урбанизирани структури
- 221 Лозя
- 222 Овощни насаждения
- 231 Пасища
- Селскостоп. площи със знач. участие на естествена растителност
- 243 Широколистни гори
- 311 Иглолистни гори
- 312 Смесени гори
- 321 Естествени ливади
- 322 Ниски храталаци-Erica и Caluna
- 324 Храталаци на прехода на гората
- 333 Площи с разпръсната растителност
- 411 Вътрешни блата
- 412 Торфища
- 421 Солени блата
- 422 Солници
- 511 Течащи потоци
- 521 Крайбрежни лагуни
- 523 Морета и океани

Internet table of National Natura 2000 list

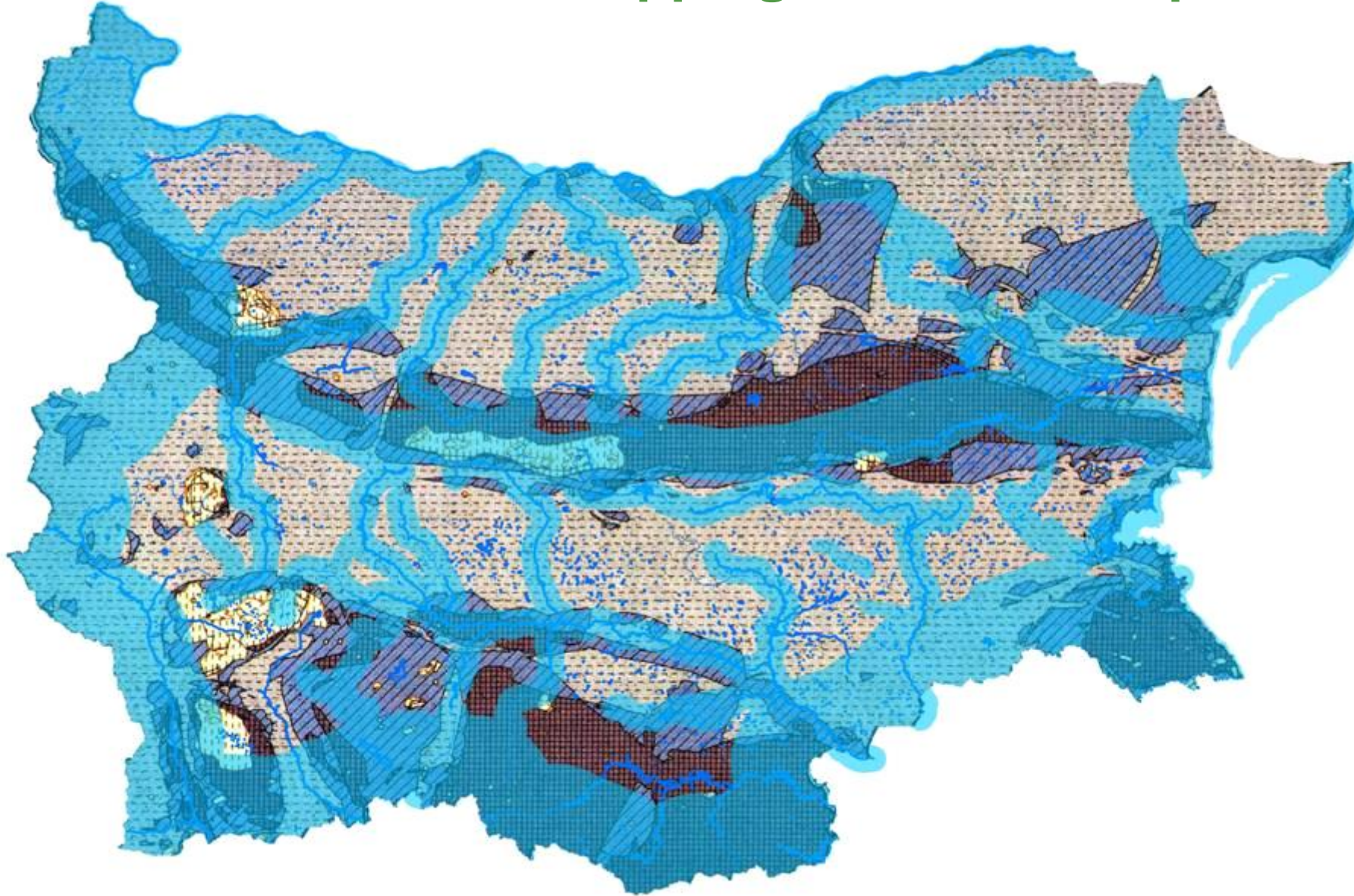
Region	Respondent	Habitats, An. I, Dir. 92/43	Birds, An. I, Dir. 79/409				Migratory birds			
			Resident	Migratory			Resident	Migratory		
				Breed	Winter	Stage		Breed	Winter	Stage

№	Code	Name_B G	Name_E N	SITE TYPE	Area, ha	Length, km	Longitud e	Latitude	Settleme nt type	Settleme nt	Cadastr al number	Municipa lity

Amph. and Rep., An.	Mammals, An. II, Dir.92/43				Fishes, An. II, Dir.92/43				Invertebr ates, An. II,	Plants, An. II, Dir.92/43
	Resident	Migratory			Resident	Migratory				
		Breed	Winter	Stage		Breed	Winter	Stage		

With links to maps for each site

Eco-corridors and stepping stones concept



process of
al network
Mountain.
5.1.12.135

National habitats coverage and distribution & species distribution and population size



Interreg - IPA CBC
Bulgaria - Turkey
PARTNERSHIP



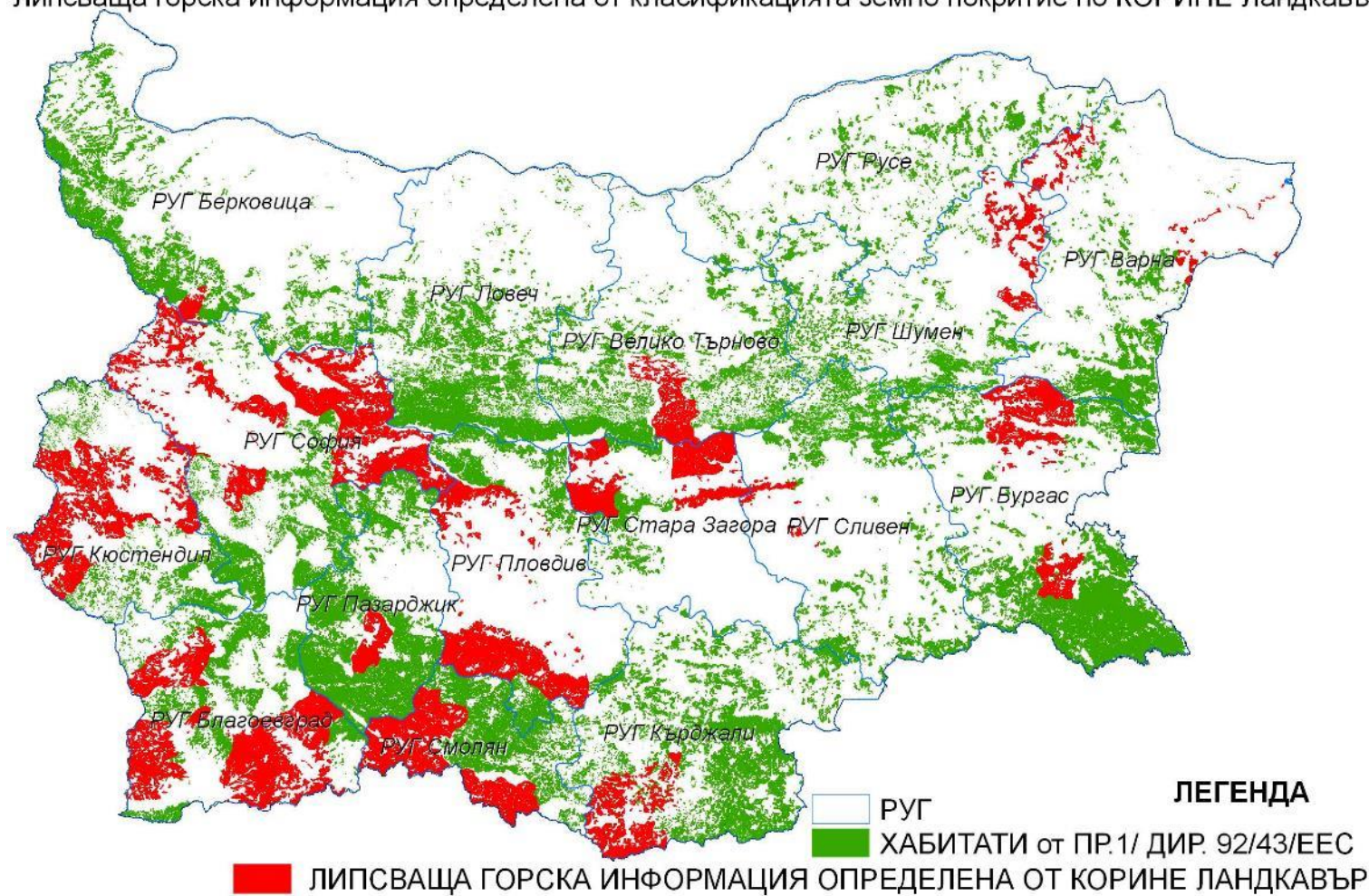
Preparation and promotion of the process of
development of European ecological network
NATURA2000 in Istranca Mountain.
Project № CB005.1.12.135

National coverage of habitats Annex I / Dir. 92/43/EEC in Bulgaria

Code	Name	Black Sea		Alpine		CONTinental		National coverage	
		Area [ha]	% of National coverage	Area [ha]	% of National coverage	Area [ha]	% of National coverage	Area [ha]	%
2180	Wooded dunes of the Atlantic, Continental and Boreal region	16.184	100.00					16.184	100
4070	Bushes with Pinus mugo and Rhododendrom hirsutum (Mugo-Rhododendretum hirsuti)			13772.737	99.96	5.551	0.04	13778.28	100
40A0	Sub continental peri-Pannonic scrubs	149.993	23.31			493.535	76.69	643.528	100
5130	Juniperus communis formations on heaths or calcareous grasslands			178.917	67.17	87.434	32.83	266.351	100
5210	Arborescent matorral with Juniperus sp	1.987	0.22	0.585	0.07	886.564	99.71	889.136	100
9110	Luzulo-Fagetum beech forests			5117.157	76.29	1590.686	23.71	6707.843	100
9130	Asperulo-Fagetum beech forests			128696.389	73.36	467438.69	26.64	596135.079	100

National coverage of forest habitats

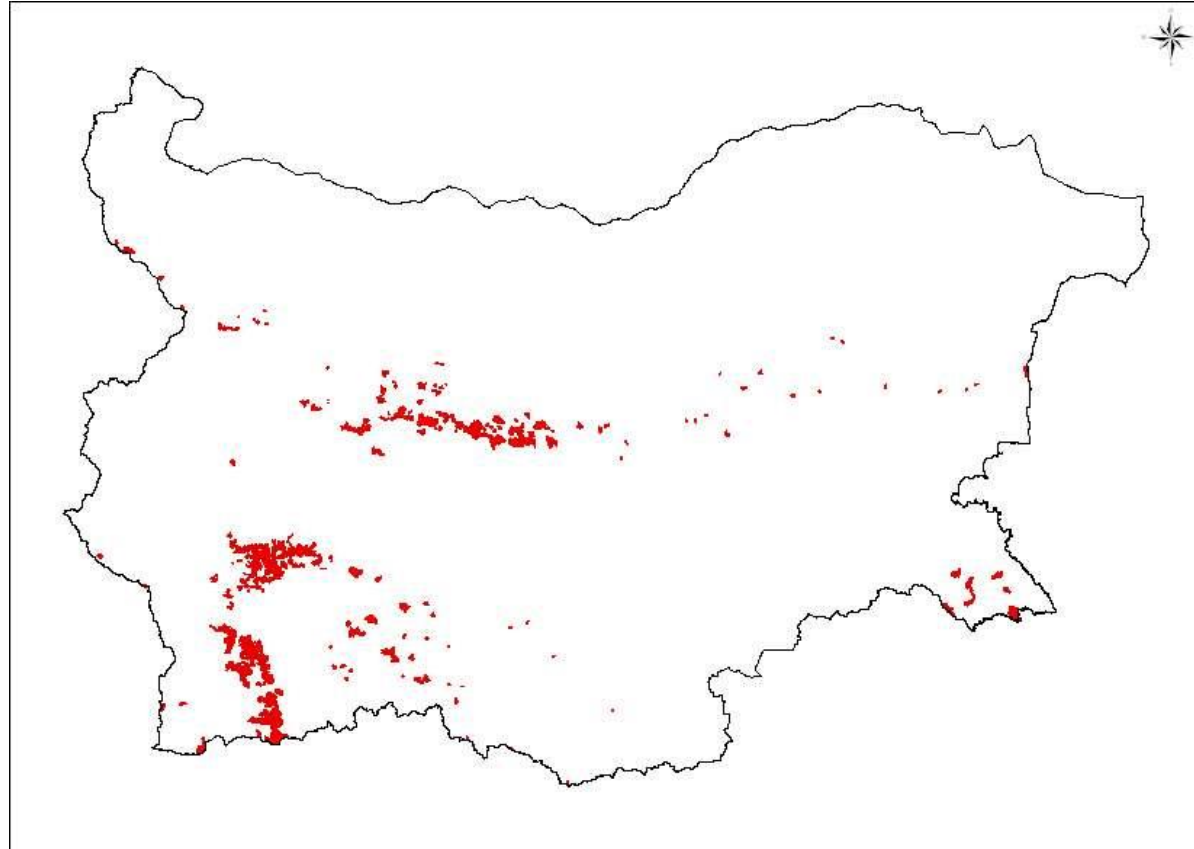
Национално покритие на хабитати от Пр.1/ Дир. 92/43/ЕЕС на територията на България
Липсваща горска информация определена от класификацията земно покритие по КОРИНЕ Ландкавър



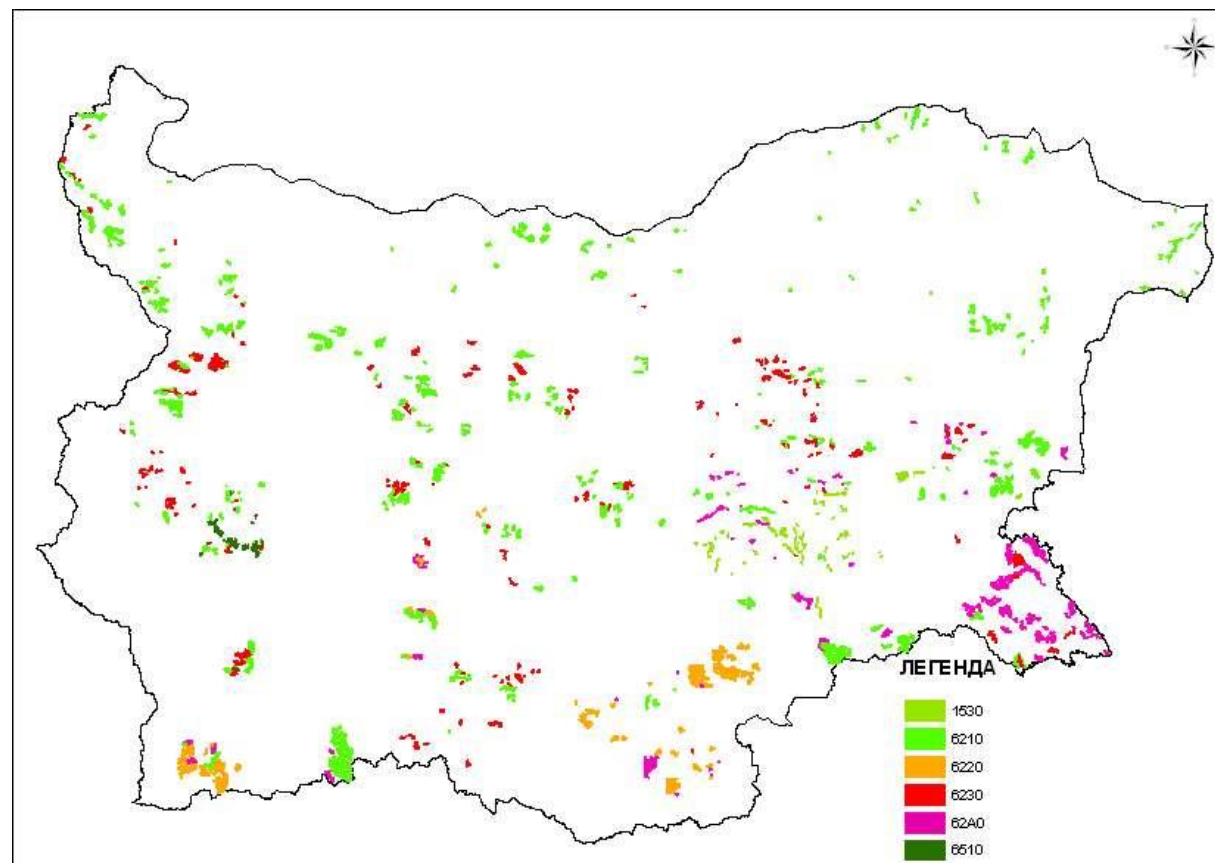
Keys for interpreting forest data

	2180	4070	40A0	5130	5210	9110	9130	9150	9170	9180	91AA	91BA	91CA	91E0	91F0	91G0	91I0	91M0	91SO	91WO	91Z0	9260	9270	92A0	92C0	9410	9530	9560	95A0
2180																													
4070																													
40A0																													
5130																													
5210																													
9110																													
9130																													
9150																													
9170																													
9180																													
91AA																													
91BA																													
91CA																													
91E0																													
91F0																													
91G0																													
91I0																													
91M0																													
91SO																													
91WO																													
91Z0																													
9260																													
9270																													
92A0																													
92C0																													
9410																													
9530																													
9560																													
95A0																													

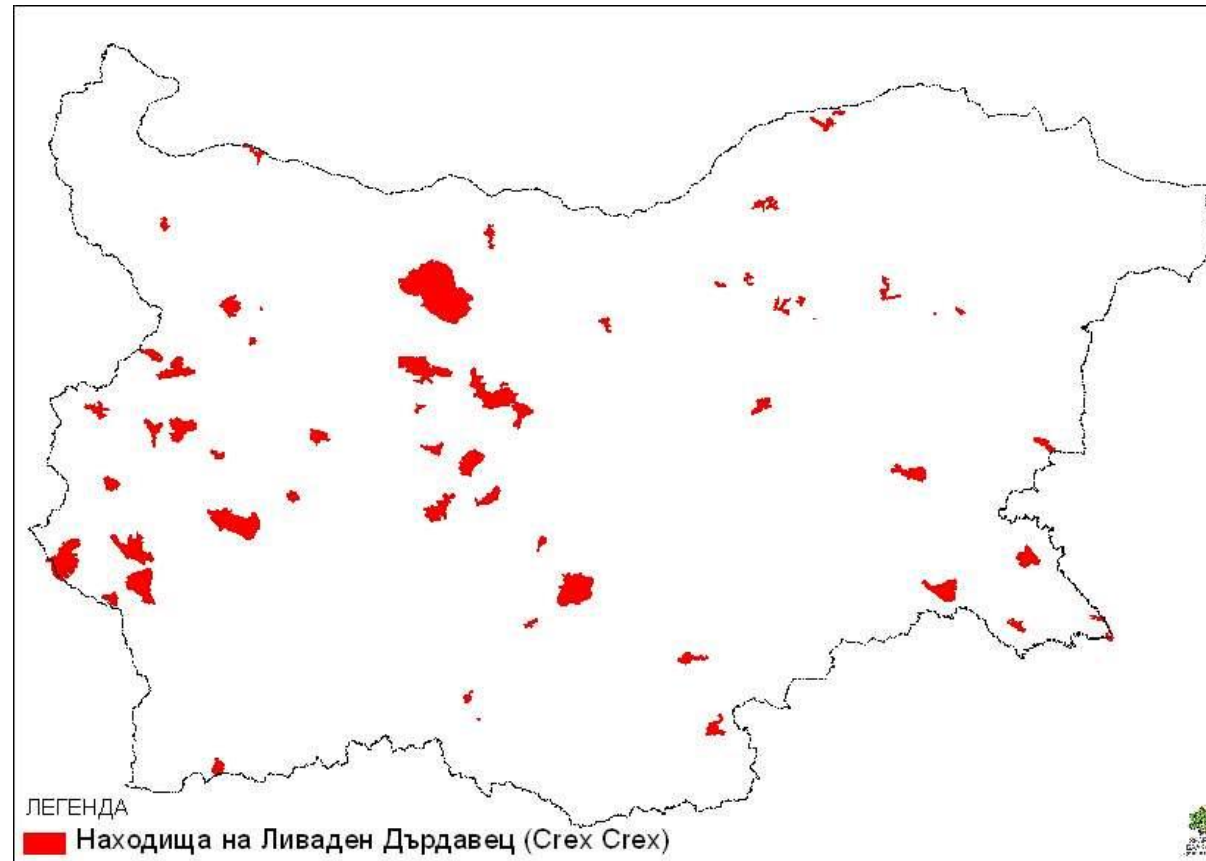
“Virgin forests of Bulgaria”, PINMATRA 2001/11, FI, BAS



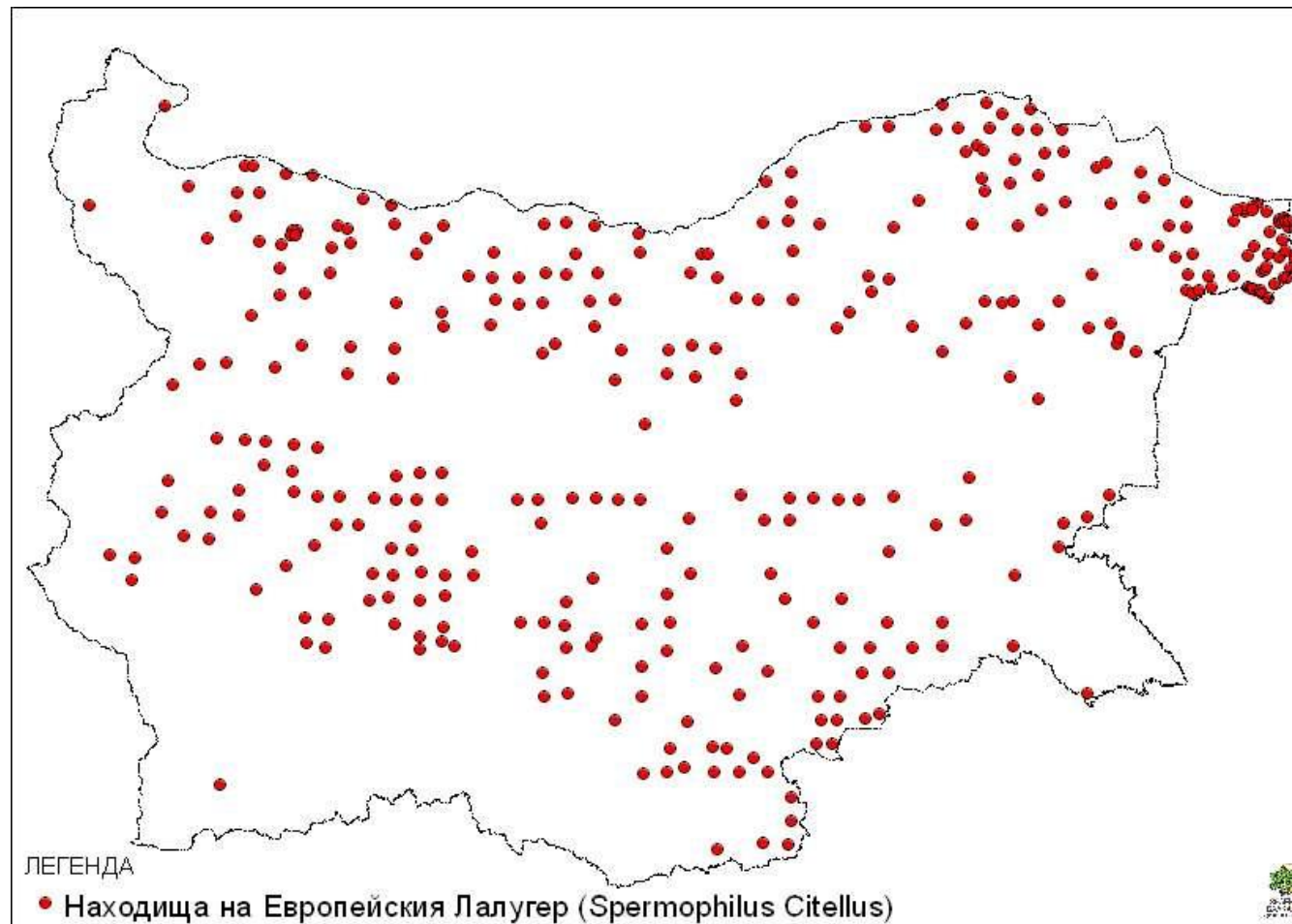
“Grasslands inventory in Bulgaria” PIN MATRA. Meshinev T., I. Apostolova, V.Georgiev, V.Dimitrov, A.Petrova, P.Veen. 2005.



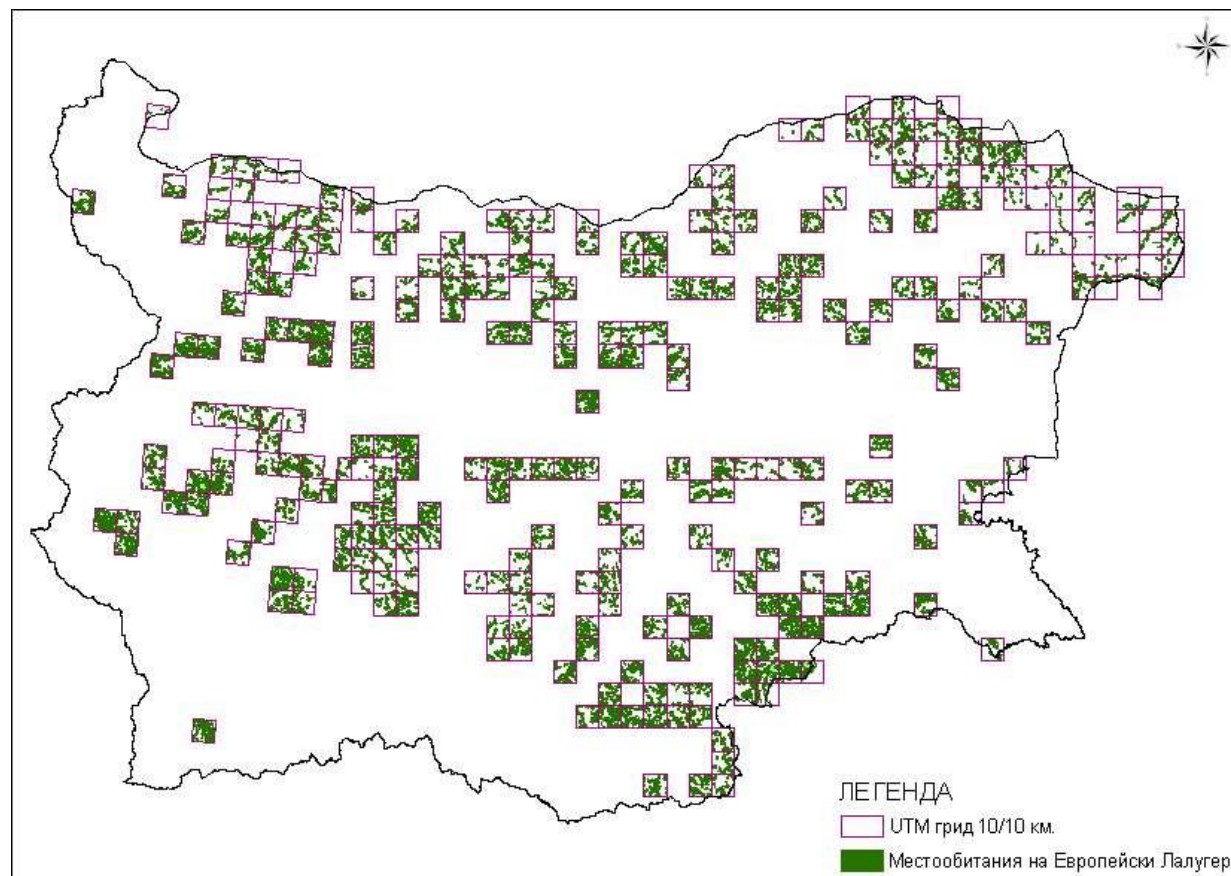
Crex Crex habitats in Bulgaria



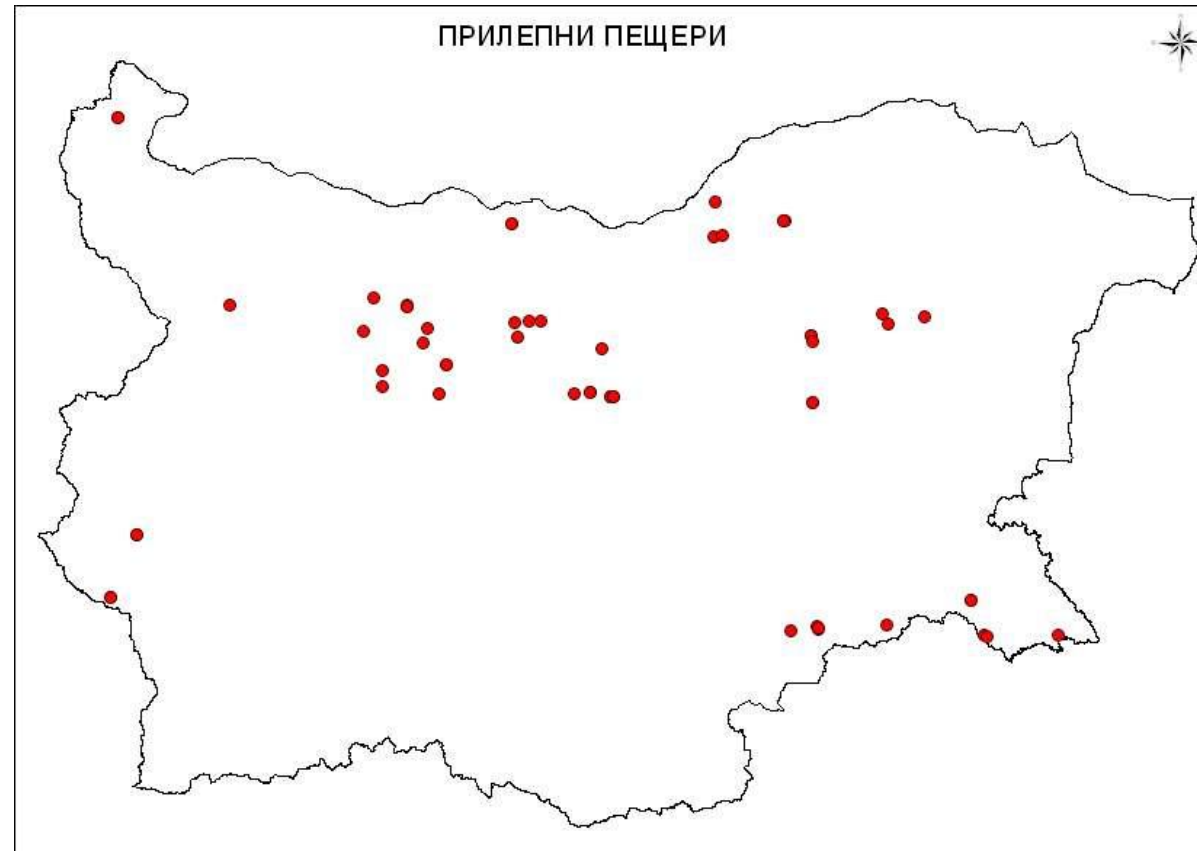
Suslic (*Spermophilus cillus*) distribution



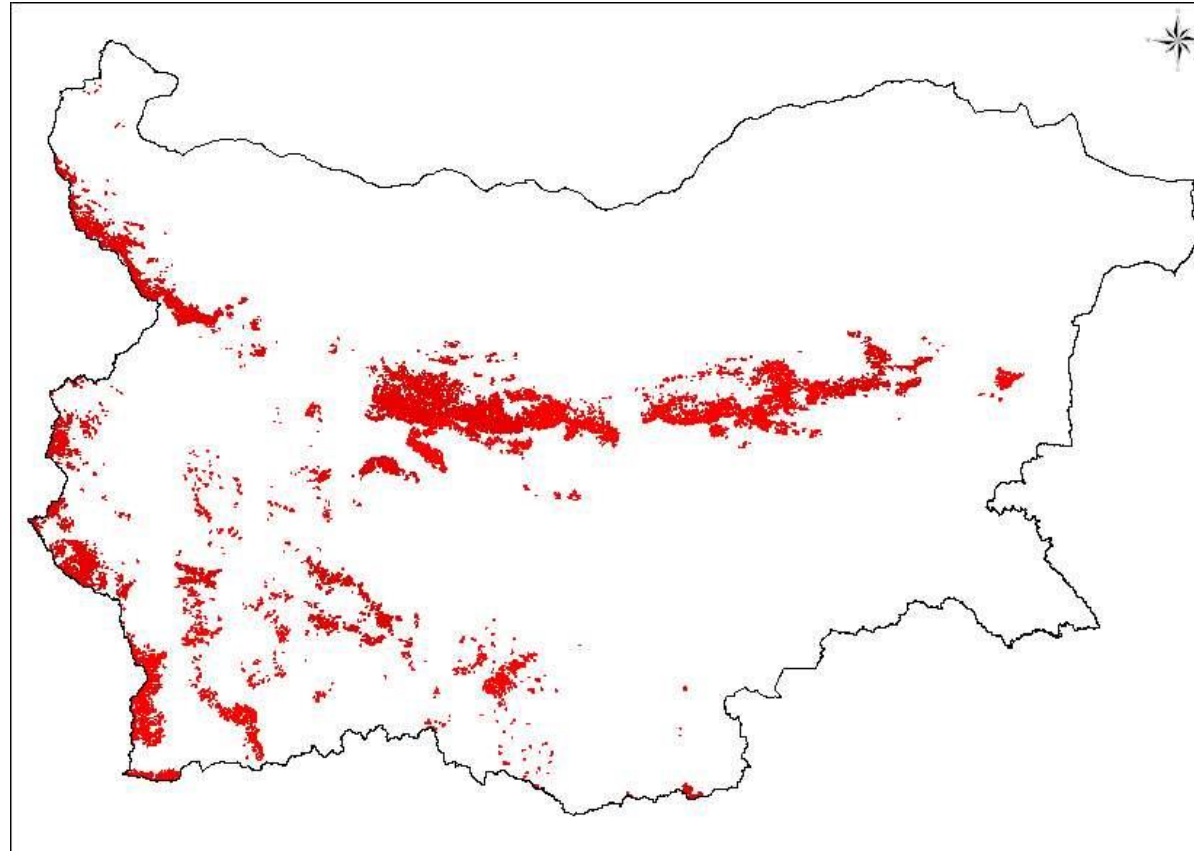
Suslic (SPERMOPHILUS CITELLUS) Distribution



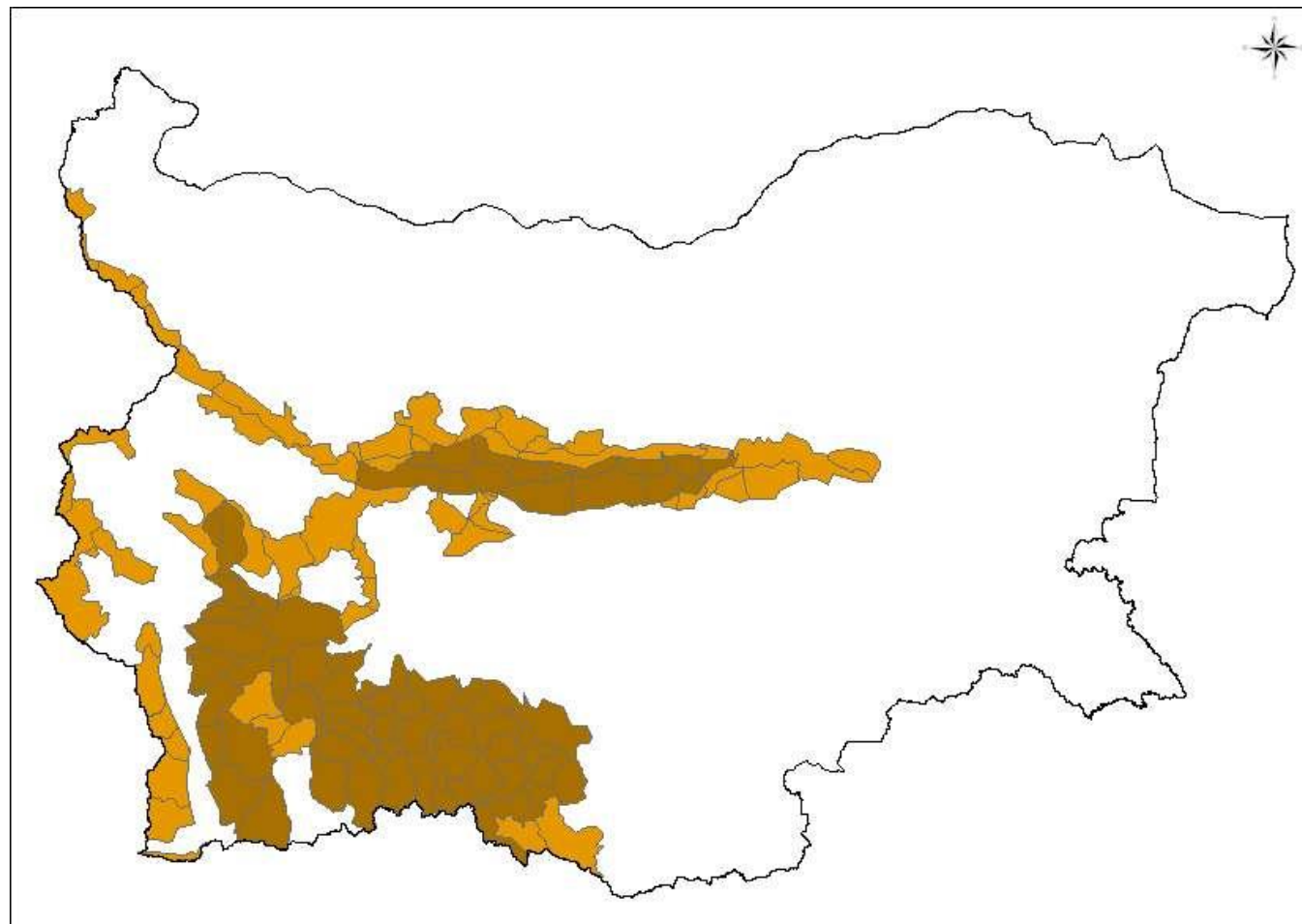
Bat caves



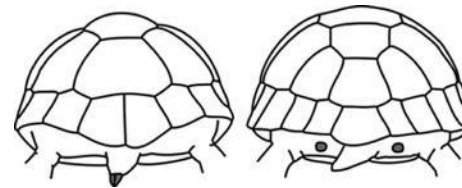
Habitats of forest bat species (Fagus forests over 80 years old)



Bear distribution and density



Involvement of Bulgarian Hunting Association in Natura 2000 preparation – questioner on recognizable species



CRITERIA FOR ASSESSING NATIONAL LISTS OF pSCI AT BIOGEOGRAPHICAL LEVEL

http://bd.eionet.europa.eu/activities/Natura_2000/pdfs/crit

List responding to three basic requirements:

1. It shall host a sufficiently large and representative sample of each habitat type and species to enable the maintenance of favourable conservation status at the level of the EU and biogeographical level, provided the supporting conservation measures within and outside the sites are in place.
2. It must only include sites of Community importance at EU or biogeographical level.
3. There should be a proportionate response, so that for those habitats and species of community interest which are rarest a high proportion of the resource will be included within the SAC series, while for those which are more abundant there will be a lower proportion of the resource within the SAC series.

.....



Preparation and promotion of the process of
development of European ecological network
NATURA2000 in Istranca Mountain.
Project № CB005.1.12.135

Phase 2. Interpretation of criteria for the selection of SCIs from the national lists of sites

1. “Priority” criterion

pSCI qualifying at a national level for at least one priority habitat type or species.

2. “Uniqueness” criterion

pSCI containing the only significant example of a non priority habitat type or species on a Member State’s list.

3. “High-quality” criterion

pSCI having a high national value for at least one non-priority habitat type or species.

4. “High-diversity” criterion

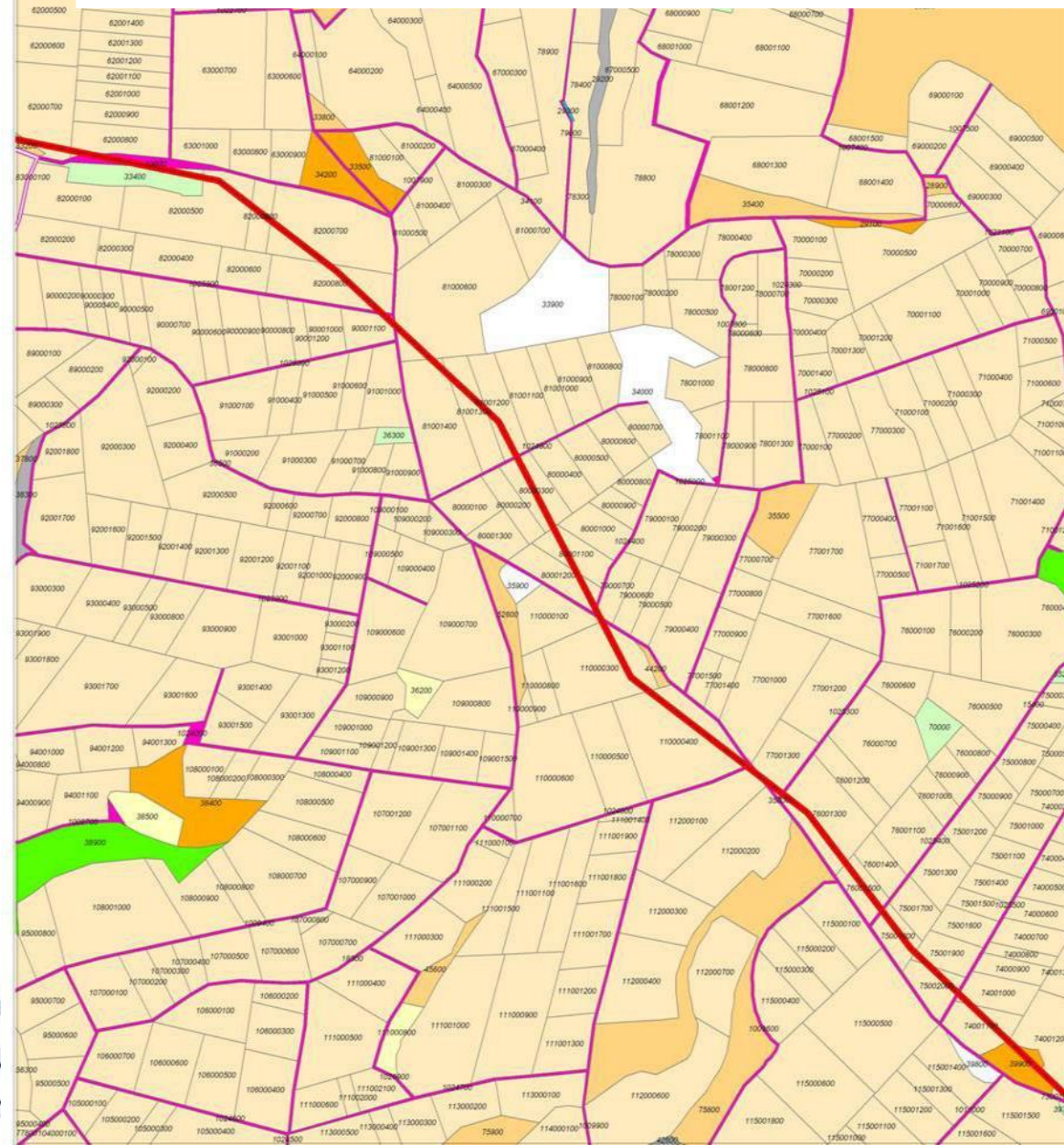
pSCI containing a significant number of non-priority habitat types and/or species, even if their respective national values have not been considered as high under the high quality criterion.

5. Network coherence” criterion

pSCI playing a relevant role to ensure the coherence (as well structural as functional) of the Natura 2000 Network.

6. “Safeguard clause” criterion

Clarification of NATURA 2000 site boundaries and adjustments of 1:100,000 maps to National cadastre in scale 1: 5 000. Estimation of land use and land purpose within proposed NATURA 2000 sites



- ГОРСКИ ПЪТ
- ГРОБИЩЕ
- ДЕРЕ
- ДР.СЕЛИЩНА ТЕР.
- ЗАЛЕСЕНА НИВА
- ИЗВОР.КАПТИРАН
- ИЗОСТАВЕНА НИВА
- ЛИВАДА
- НАВОДНЕНА ЛИВАДА
- НАСЕЛЕНО МЯСТО
- НИВА
- ОВРОГ; ПРОМОЙНА
- ОВЦЕФЕРМА
- ПАСИЩЕ МЕРА
- ПАСИЩЕ С ХРАСТИ
- ПОЛСКИ ПЪТ
- ПЯСЪК
- СКАЛА
- СПОРТЕН ТЕРЕН
- СТОПАНСКИ ДВОР
- ХРАСТИ



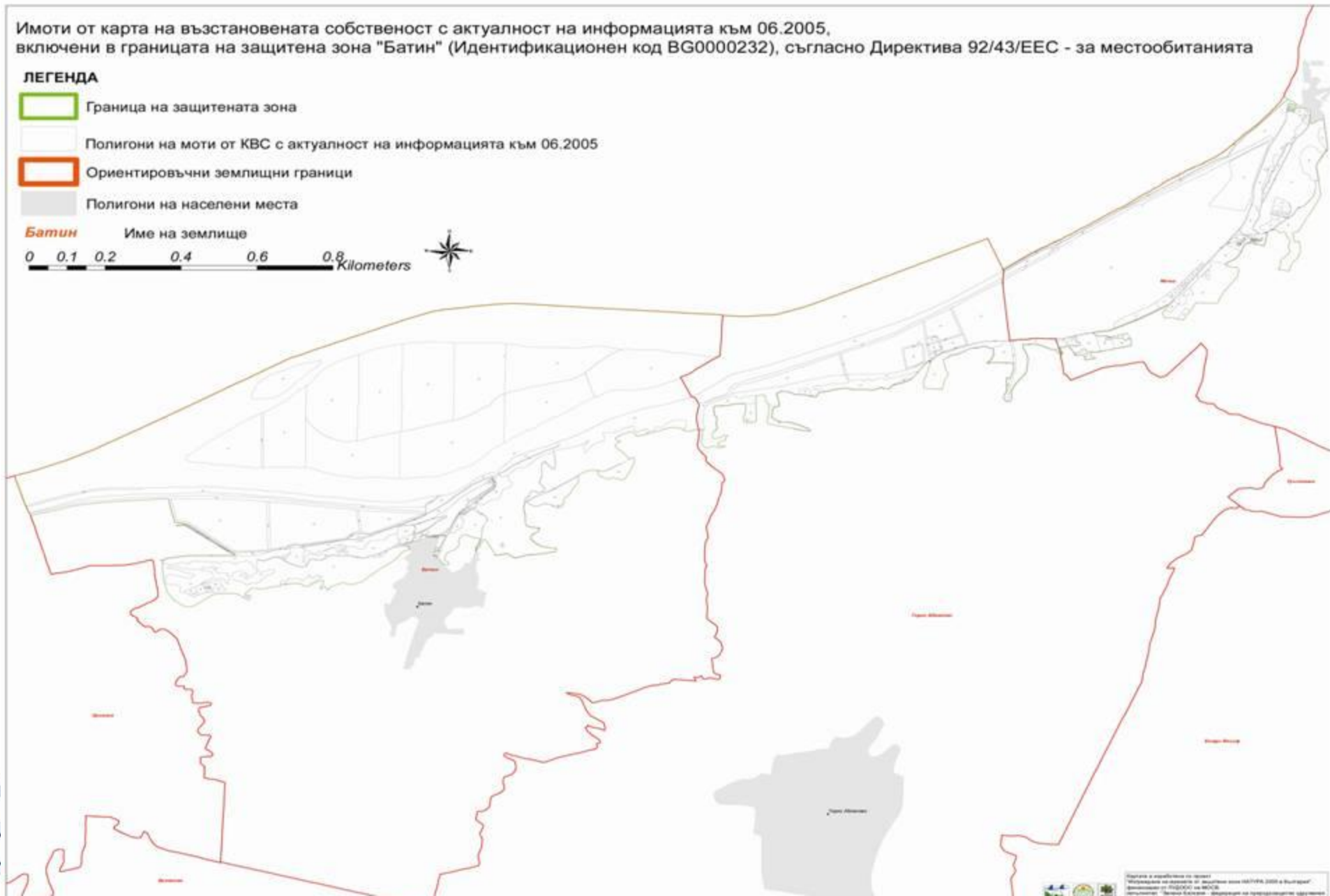
In
Bu
PAR

Preparation and pron
development of Europ
NATURA2000
Project



f the process of
logical network
anca Mountain.
B005.1.12.135

Maps on cadastre M 1:5000



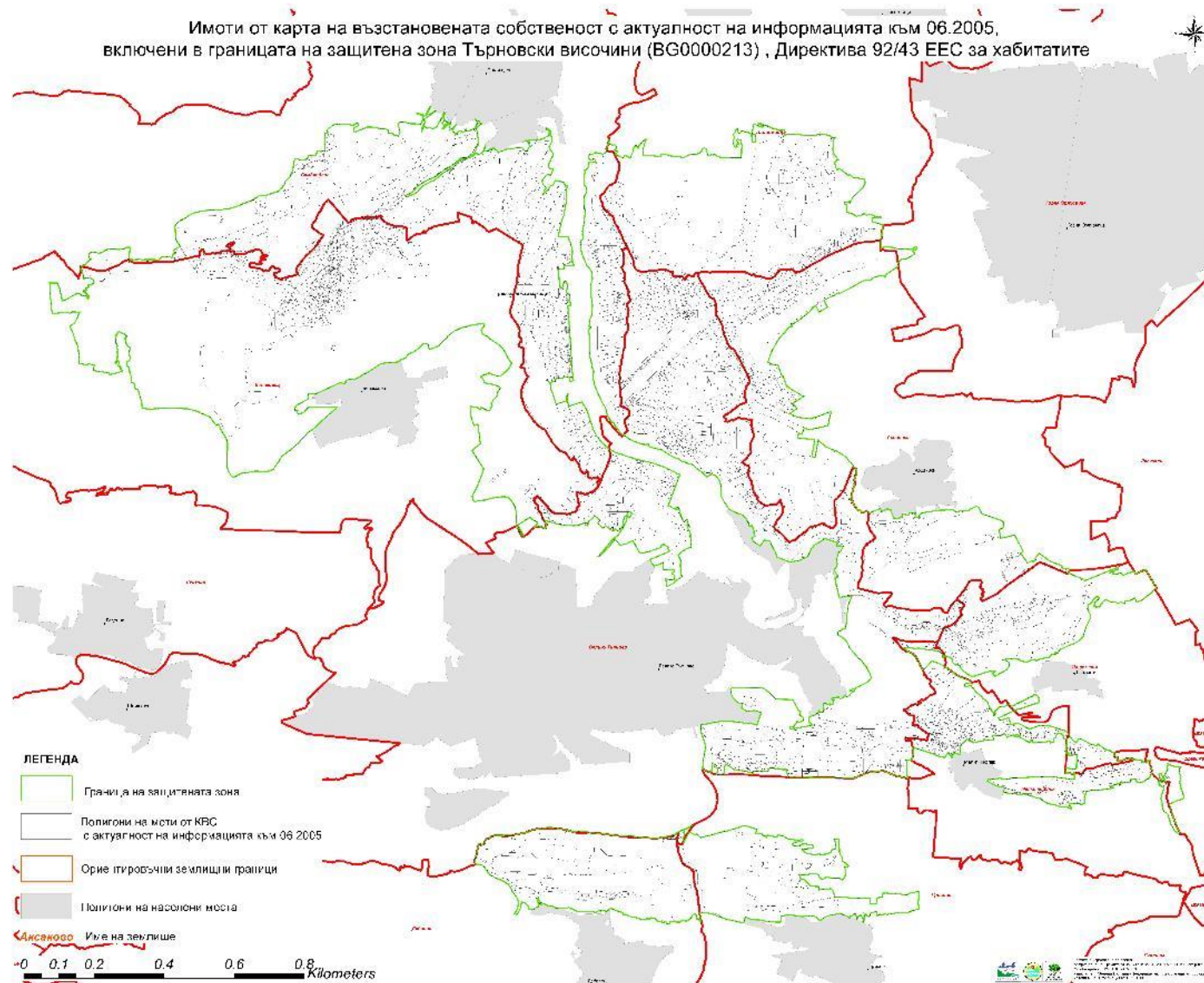
the process of
gical network
ca Mountain.
005.1.12.135



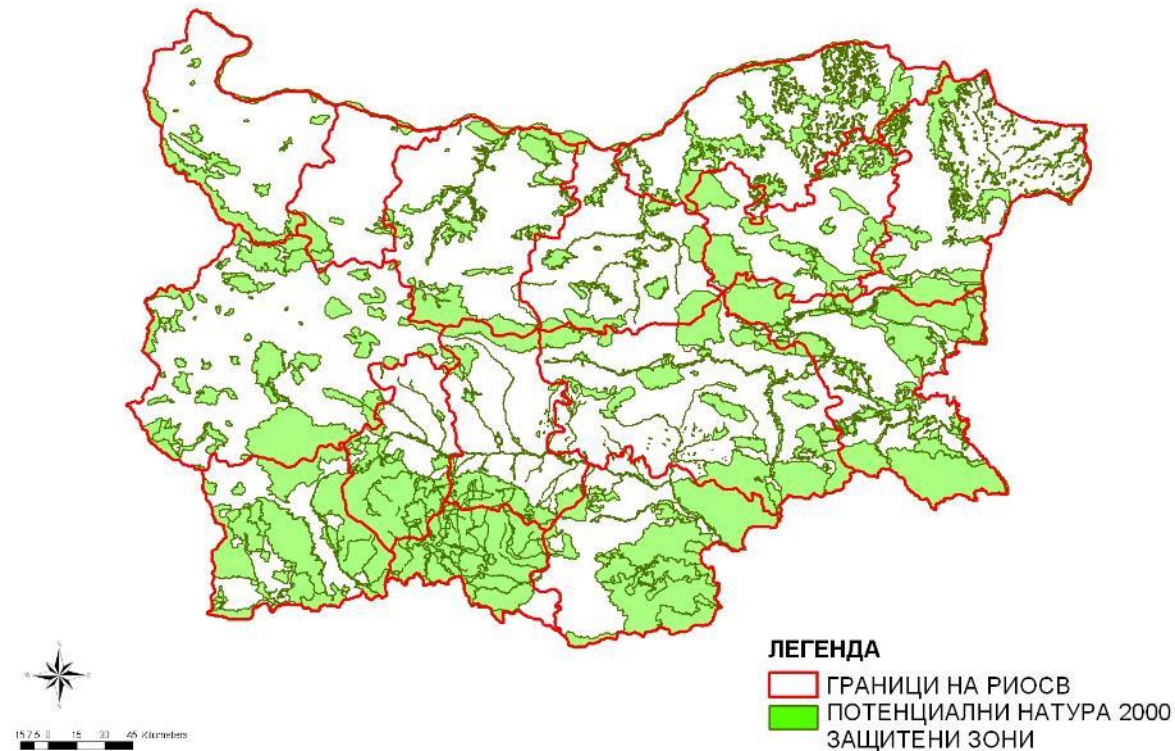
EUROPEAN UNION

In
Bu
PAR

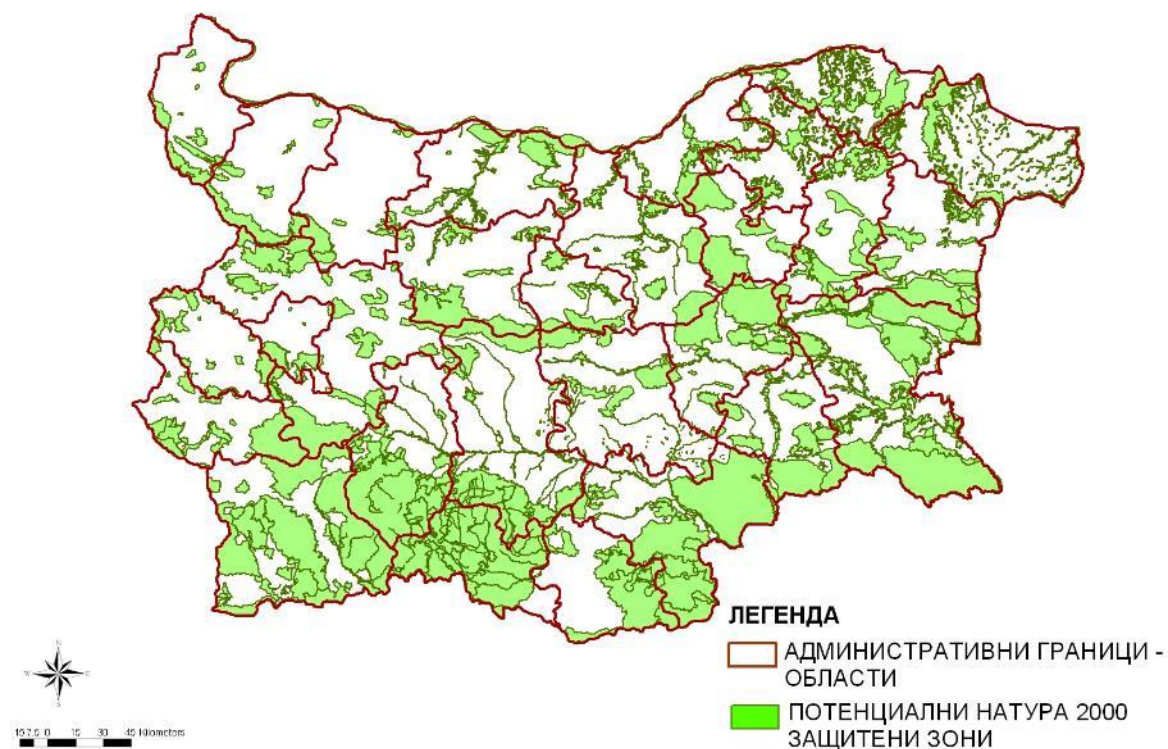
Maps on cadastre M 1:5000



Relation of the potential Natura 2000 network to the administrative dividing (Regional inspectorates of MoEW)

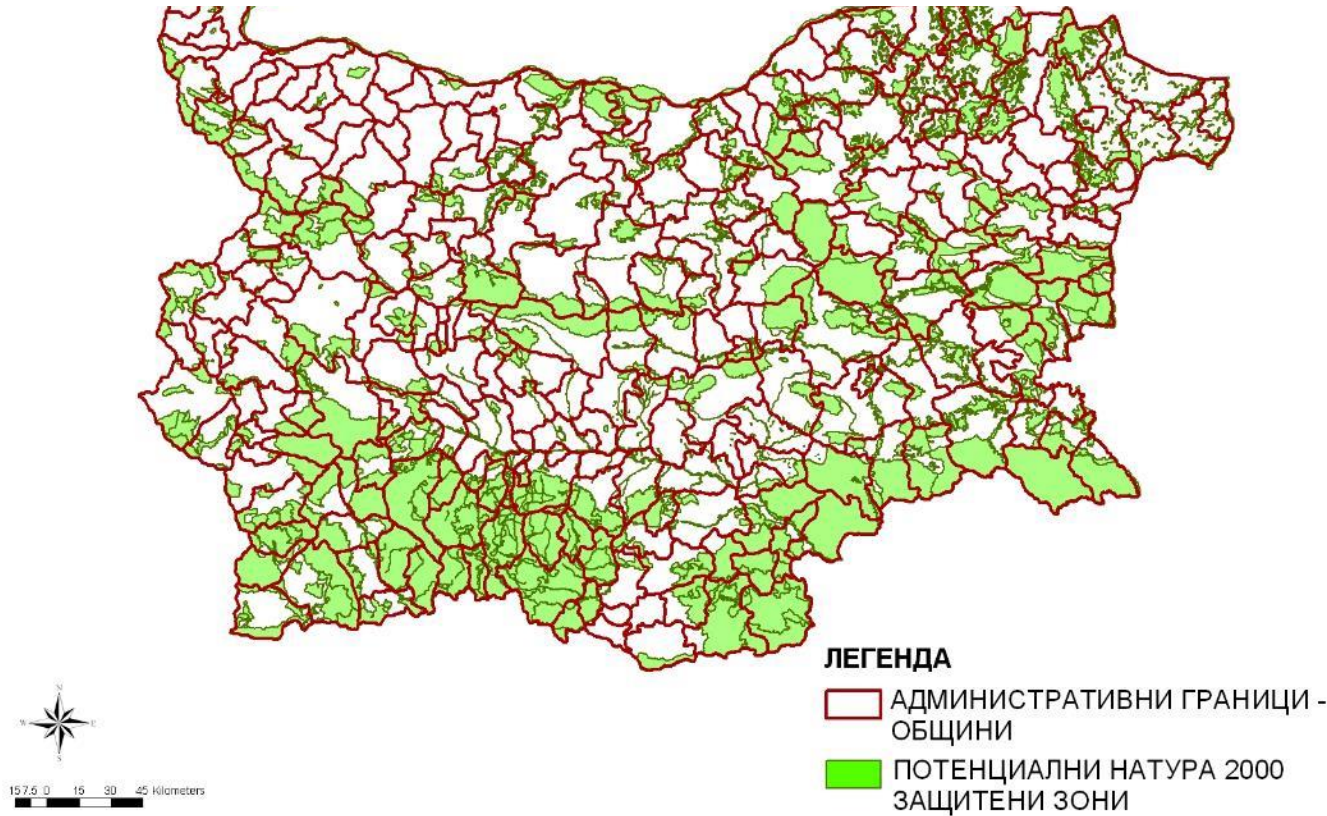


Relation of the potential Natura 2000 network to the administrative dividing (regions)



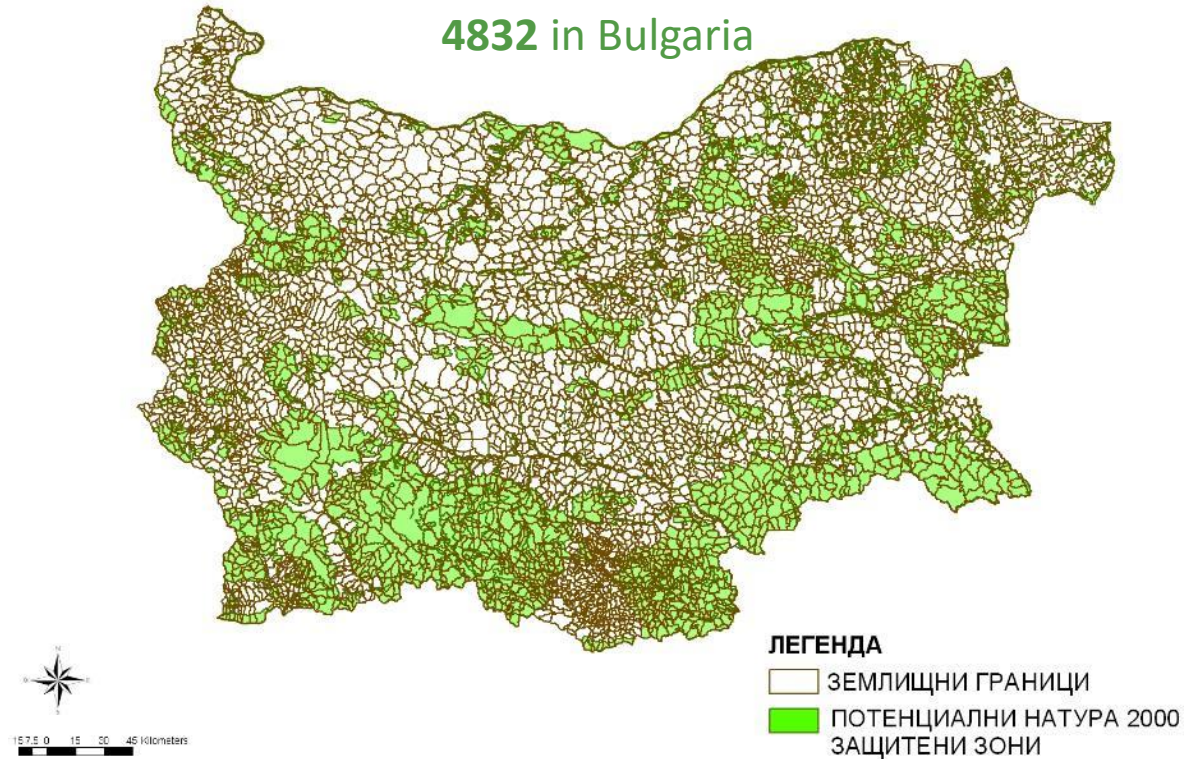
Relation of the potential Natura 2000 network to the administrative dividing (Municipalities)

*Natura 2000 sites are on the territory of **252** municipalities, of total **262** in Bulgaria*



Relation of the potential Natura 2000 network to the administrative dividing (zems)

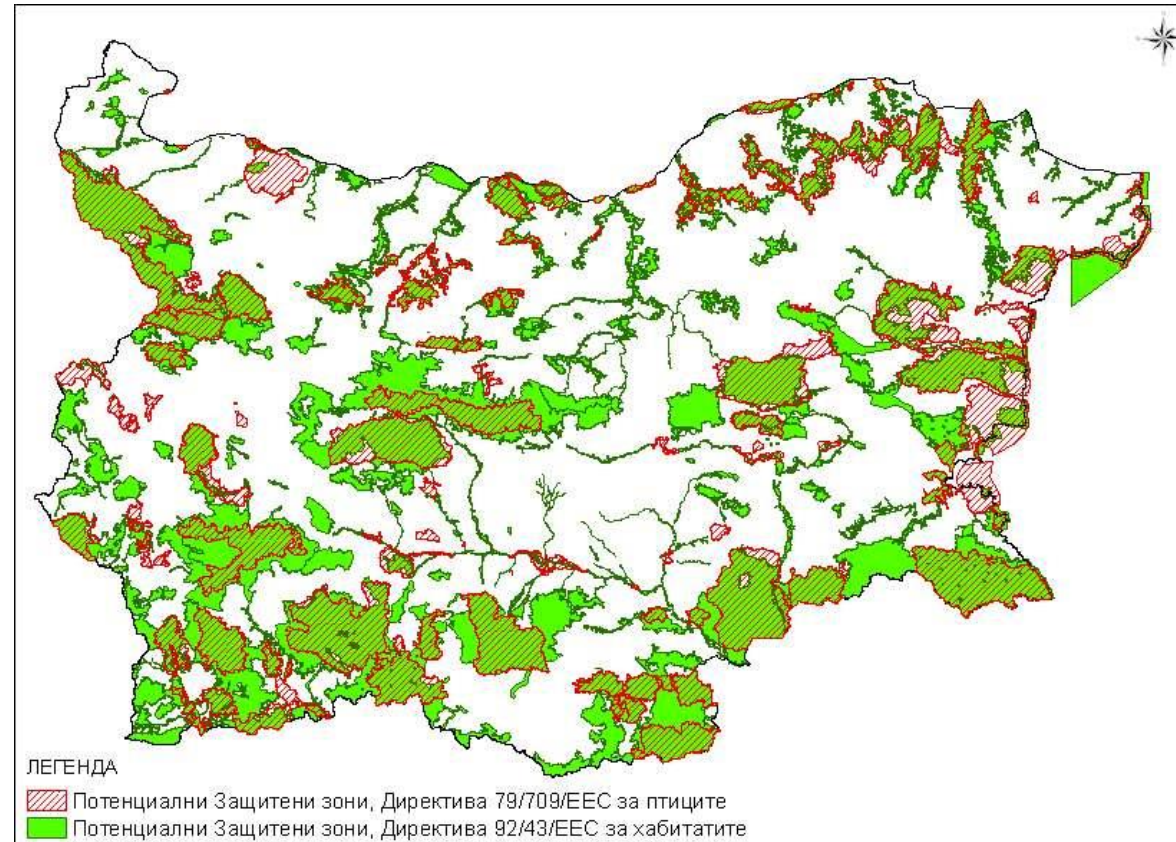
Natura 2000 sites are in **3204** “zems” of total **4832** in Bulgaria



30 min. film on establishment of Natura 2000 in Bulgaria



Proposed by NGOs Natura 2000
34,5% of terrestrial area (November 2006)



POSTPONED NATURA 2000 SITES

National Council on Biodiversity - 21. 11. 2006

- ❖ National Forestry Board rejected **29** pSCIs - postponed for additional clarifications

Government decision № 122/ 02. 03. 2007

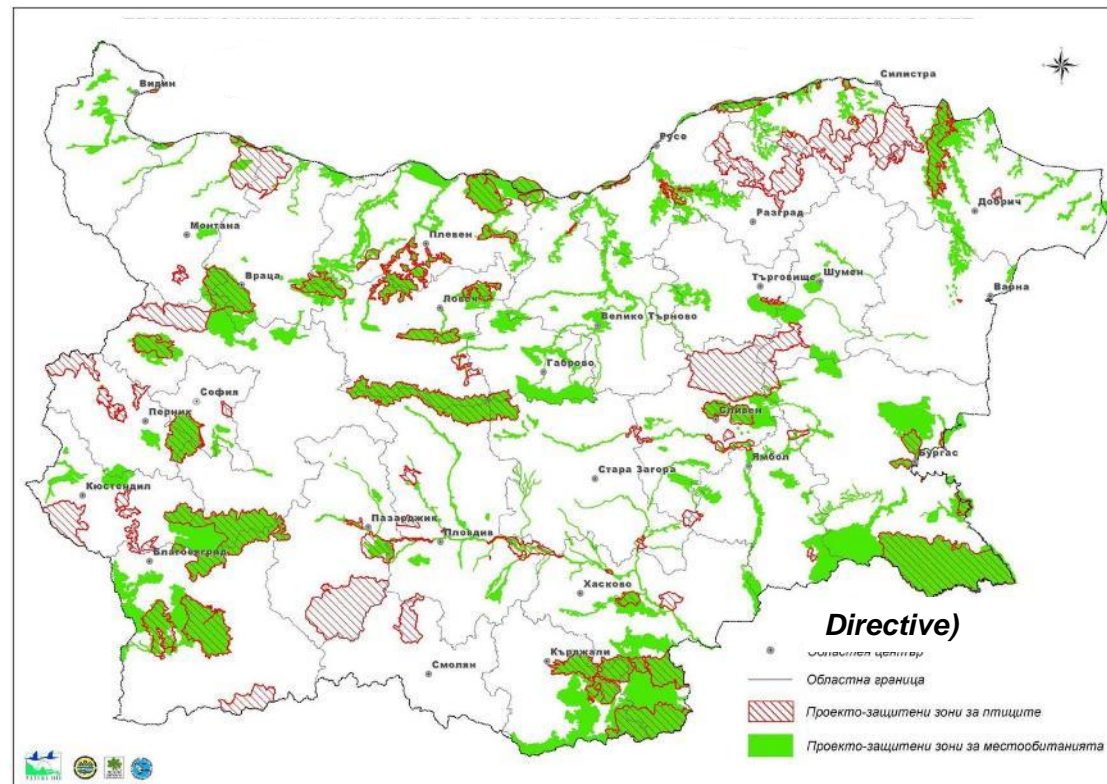
- ❖ New **16** pSCIs remitted for reconsideration by the National Biodiversity Council
- ❖ and **26** SPAs remitted for reconsideration by the National Biodiversity Council

Deadline - October 2007

on of the process of
ecological network
Istranca Mountain.

Project № CB005.1.12.135

Approved by Government decision № 122/ 02. 03. 2007
88 SPAs –11.3 %, 180 pSCIs – 13.3%, Total 18.2 % of the territory



POSTPONED NATURA 2000 SITES

Next development

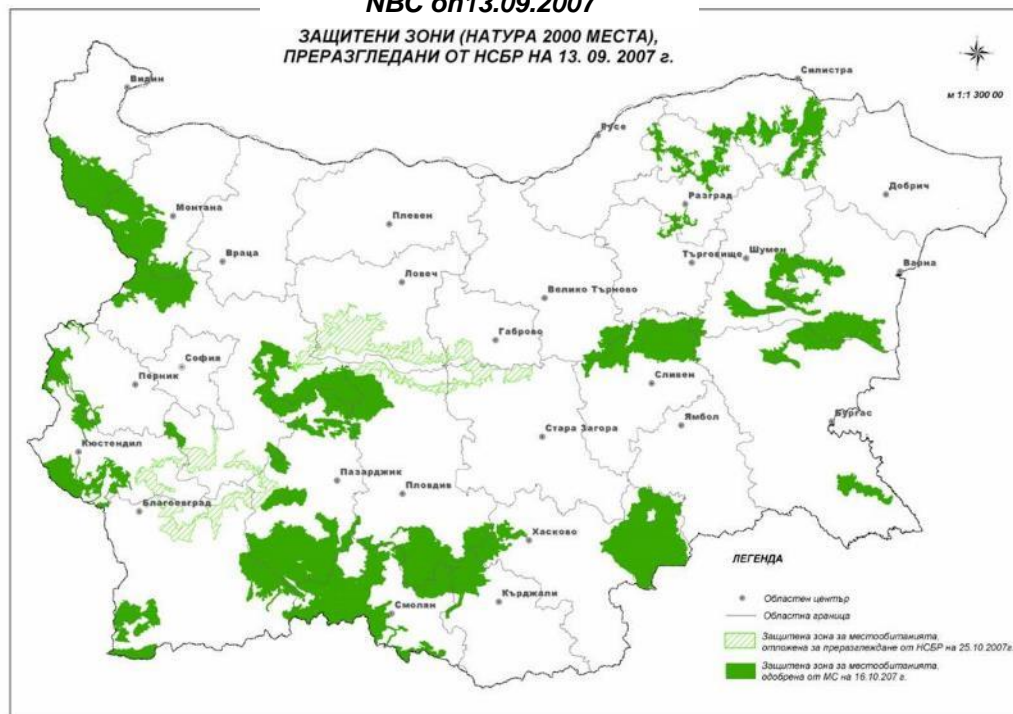
- ❖ Reduced list of Natura 2000 sites (Gov/Dess № 122/02.03.2007) submitted to EK;
- ❖ In the preliminary report of the ETCentre on Biological Diversity it is described as insufficient
- ❖ In 2007 BAS was hired by MoEW to verify the information . In the SDF

ПРЕРАЗГЛЕЖДАНЕ НА СПИСЪКА С МЕСТА ОТ НАТУРА 2000

НСБР от 13. 09. 2007 и решение на МС № 661/ 16. 10. 2007

*pSCIs reconsidered by the
NBC on 13.09.2007*

ЗАЩИТЕНИ ЗОНИ (НАТУРА 2000 МЕСТА),
ПРЕРАЗГЛЕДАНИ ОТ НСБР НА 13. 09. 2007 г.



NCBD 13. 09 . 2007

- ❖ Reconsidering of **29** pSCIs, postponed by NFB;
- ❖ **26** pSCIs approved without changes in their boundaries;
- ❖ **1** pSCI approved with reduced boundaries;
- ❖ **2** pSCIs once again turned for clarification.

Government Decigion № 661 16th October 2007:

*New **26** pSCI approved (**207** in total) covering **26,5 %** of the Territory and sent to the EK*

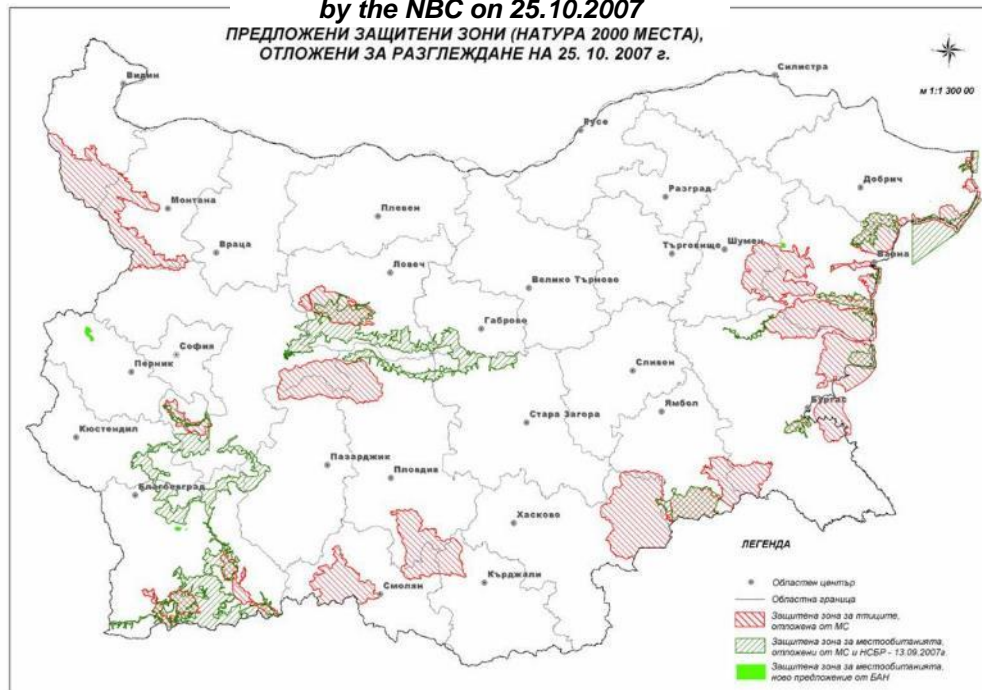
ПРЕРАЗГЛЕЖДАНЕ НА СПИСЪКА С МЕСТА ОТ НАТУРА 2000

НСБР от 25. 10. 2007 и решение на МС № 802/ 04. 12. 2007

Natura 2000 sites reconsidered

by the NBC on 25.10.2007

ПРЕДЛОЖЕНИ ЗАЩИТЕНИ ЗОНИ (НАТУРА 2000 МЕСТА),
ОТЛОЖЕНИ ЗА РАЗГЛЕЖДАНЕ НА 25. 10. 2007 г.



NCBD 25. 10 . 2007

- ❖ Accepting of all previously proposed pSCIs + 4 of Botany, BAS;
- ❖ Approved 21 pSCIs & 26 SPAs;
- ❖ 1 pSCI Rila bufer - rejected;

Government Decigion № 802, 04.12.2007

Approved: new 26 SPAs = Total 114 SPAs - 20.4 %
& new 21 pSCIs = Total 228 pSCIs - 29.5 % of the territory

ЗАЩИТЕНИ ЗОНИ (НАТУРА 2000 МЕСТА), ОДОБРЕНИ ОТ МИНИСТЕРСКИ СЪВЕТ

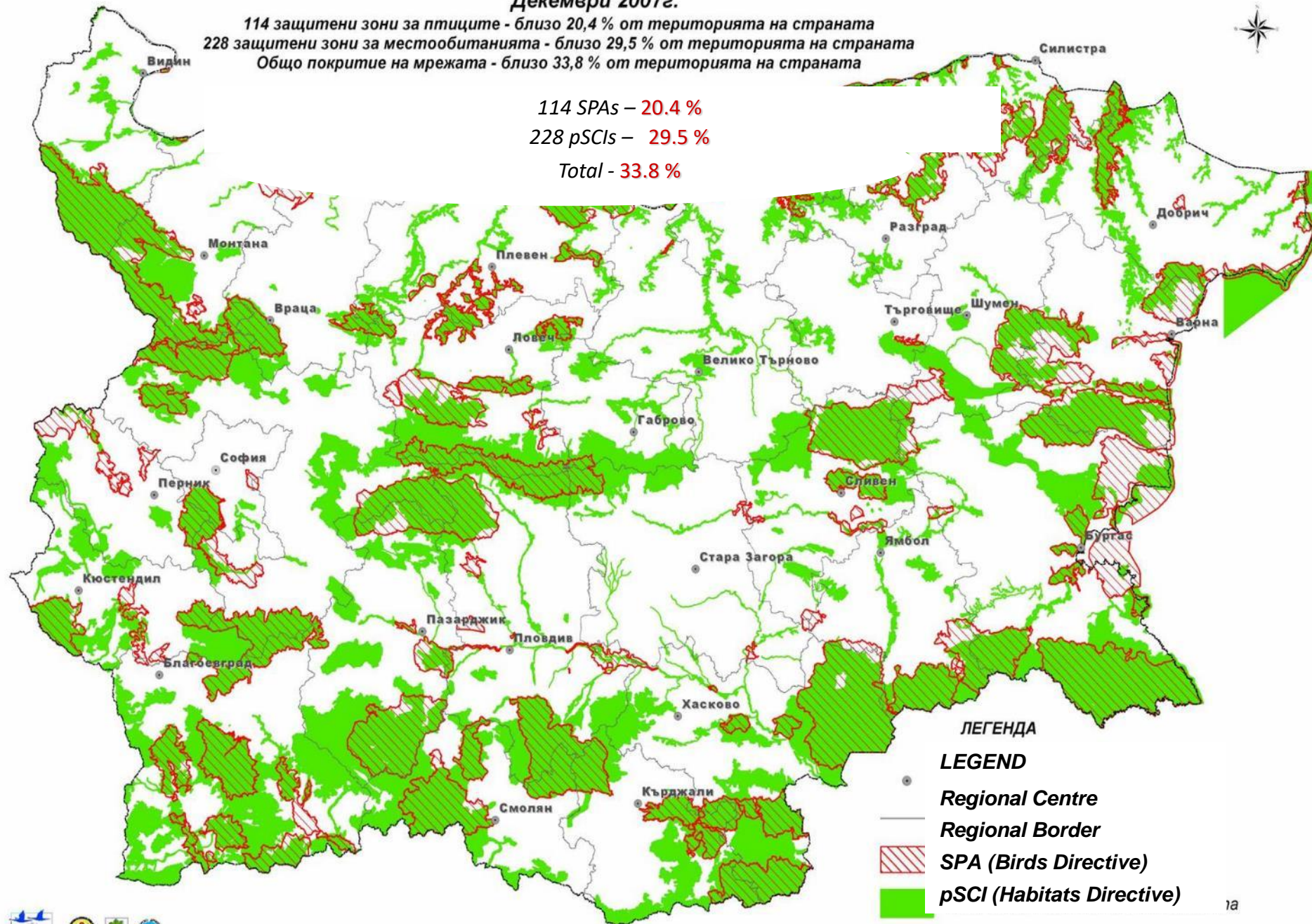
Декември 2007г.

114 защитени зони за птиците - близо 20,4 % от територията на страната
228 защитени зони за местообитанията - близо 29,5 % от територията на страната
Общо покритие на мрежата - близо 33,8 % от територията на страната

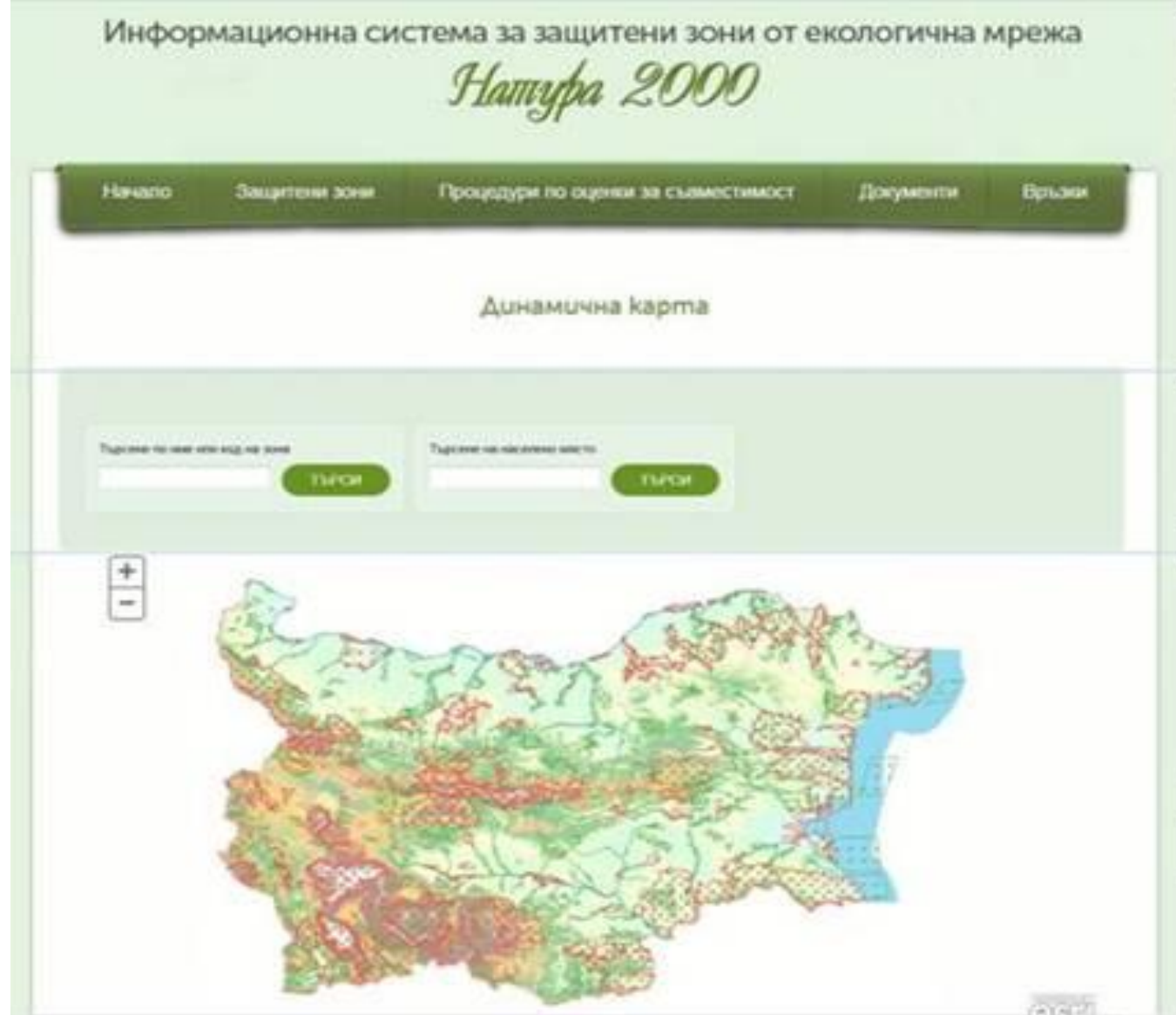
114 SPAs – 20.4 %

228 pSCIs – 29.5 %

Total - 33.8 %



he process of
gical network
ca Mountain.
005.1.12.135



<http://natura2000.moew.government.bg/>

<http://natura2000.moew.government.bg/Home/Natura2000ProtectedSites>



<http://natura2000.moew.government.bg/Home/ProtectedSite/?code=BG0000402&layerId=4>



Thank you!

